



**ASSAM
CANCER CARE
FOUNDATION**
A Government of Assam
and TATA Trusts Initiative

DESIGN PRESENTATION – L3



CONTENTS

LOCATION

DESIGN CONCEPT
MOODBOARD

RECEPTION / LOBBY
EMERGENCY LOBBY
RADIOTHERAPY LOUNGE
LINAC BUNKER
OPD LOUNGE
OPD CORRIDOR
OPD CONSULTATION
MRI SCAN
CHEMOTHERAPY WARD
GENERAL WARD



Tezpur Cancer Centre, Assam.

FORTITUDE BAMBOO NATURE

Fortitude refers to strength in the face of adversity or difficulty. This word comes from the Latin word *fortitudo*, meaning "strength."

People who have fortitude are described in an admiring way for their courage.

This, we believe is one of the core characteristics of every cancer patient.

We are Primarily using the element 'Bamboo' to depict fortitude. Bamboo has greater tensile strength than steel, and it withstands compression better than concrete!!!



WOOD (BAMBOO)



WATER



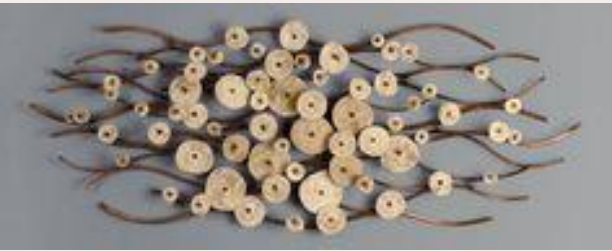
EARTH

Nature is the Paradigm of strength in the times of difficulty. It stands strong during times of hardships & emerges stronger. We are hence considering the 5 Basic Elements of the Universe to depict Fortitude of Nature with Bamboo as the core element..

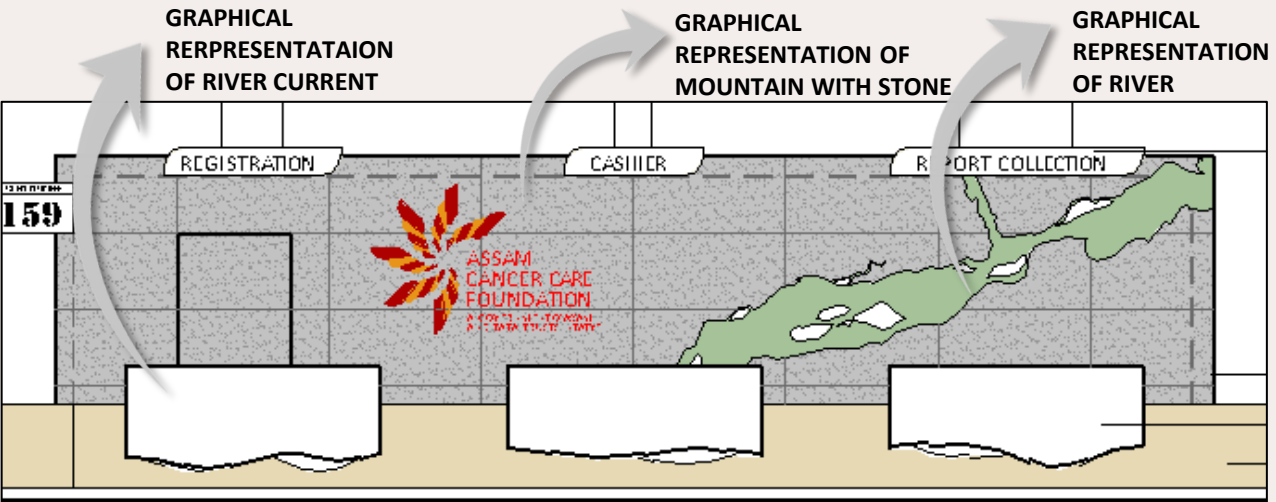
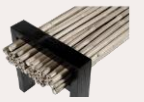


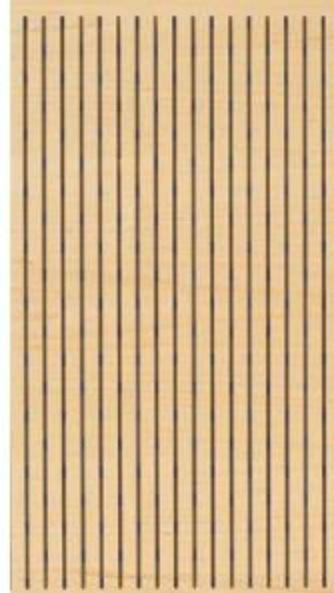
We have depicted different **Elements of Nature** through use of Stone in the Reception Backdrop, Paint Graphic in spaces, Bamboo furniture, Bamboo and metal murals.

Tea Estate plans represented as art in the form of Fingerprints – bringing a sense of touch. The Moss Outline in the reception backdrop showcasing Bramhaputra The river currents on reception tables & help desks, etc

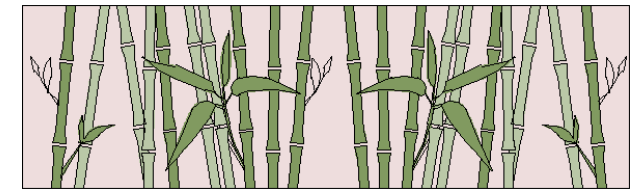


ARTWORK





Graphical Representation Of Bamboo as Painted Accents



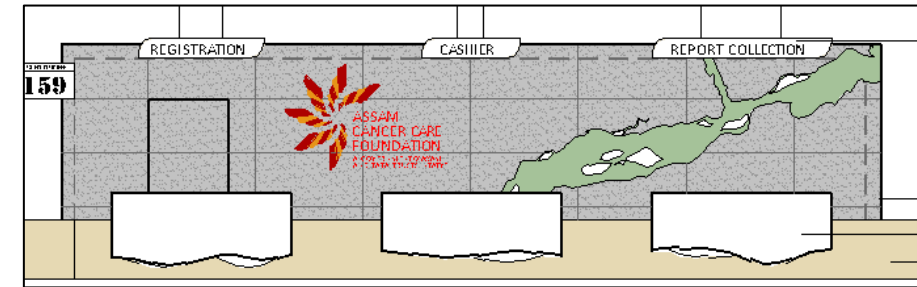
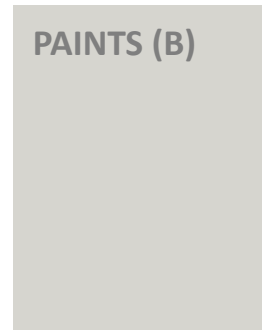
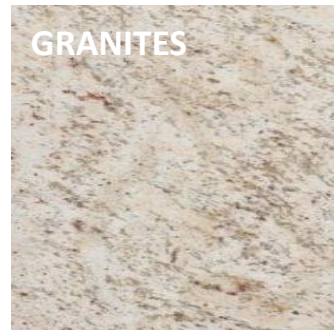
ARTWORK

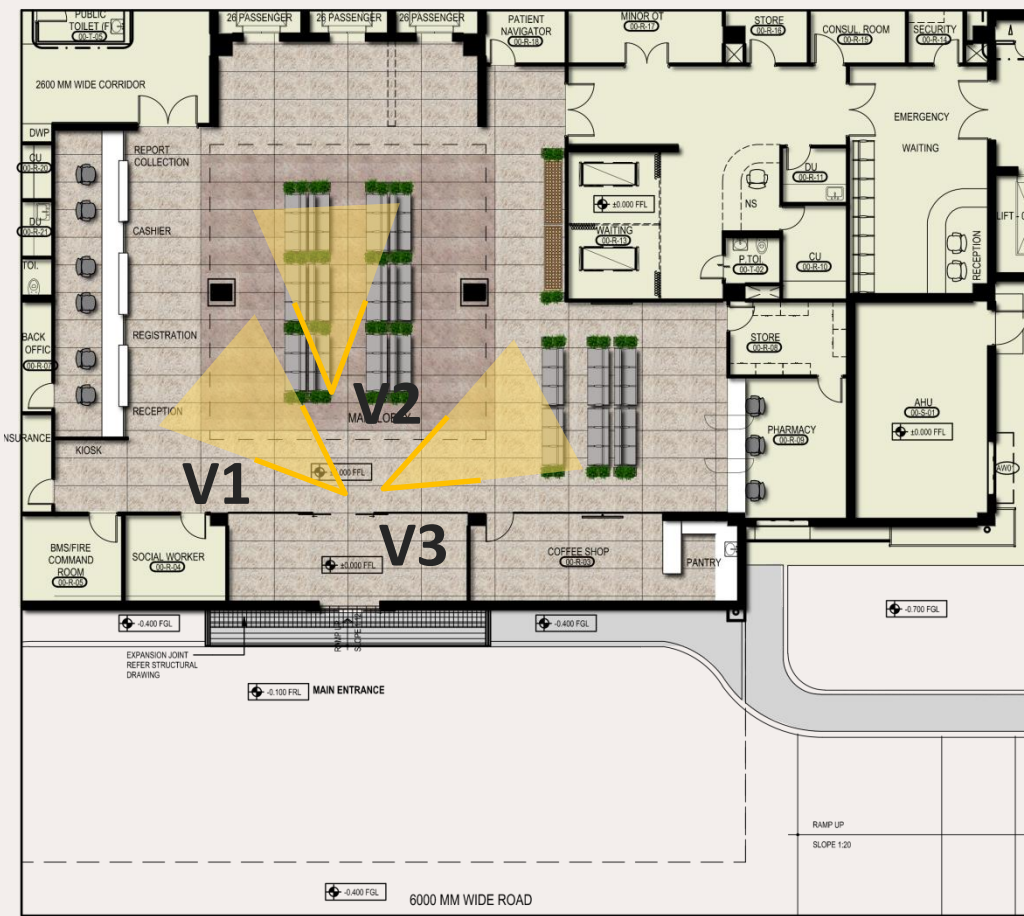


Natural Textures like Stone Wood Fauna resonate with our concept.

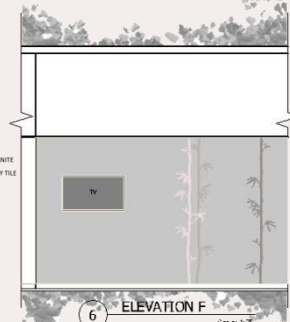
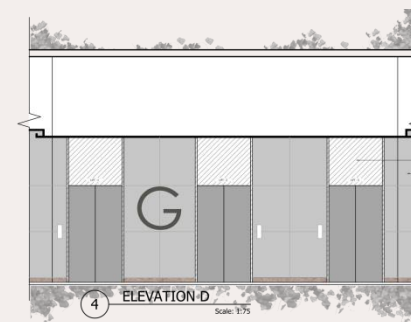
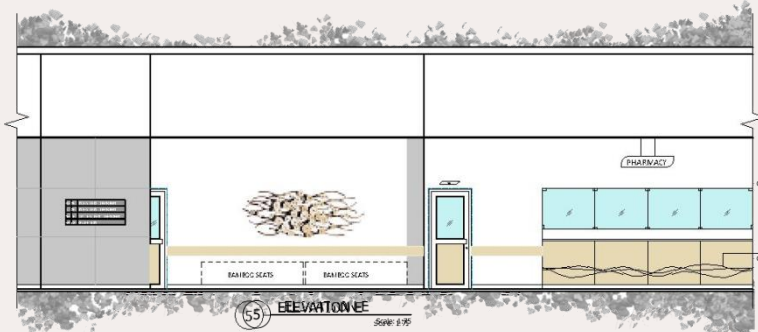
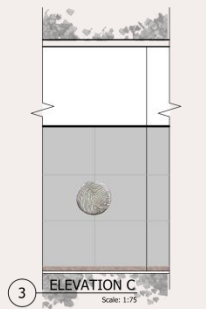
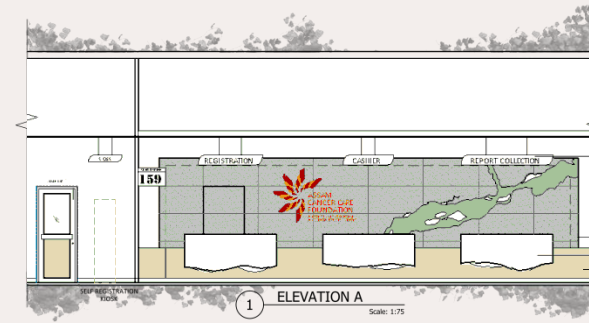
Vitrified tile and granite shades corresponding to the colour palette are used for the flooring with accents.

Graphic representation of bamboo are seen in wall painted murals, special waiting seating etc





Two focal points are created- one using the flooring pattern and false ceiling with wooden tone with seating , and the second – a grand reception, both depicting a sense of direction as you enter the lobby.



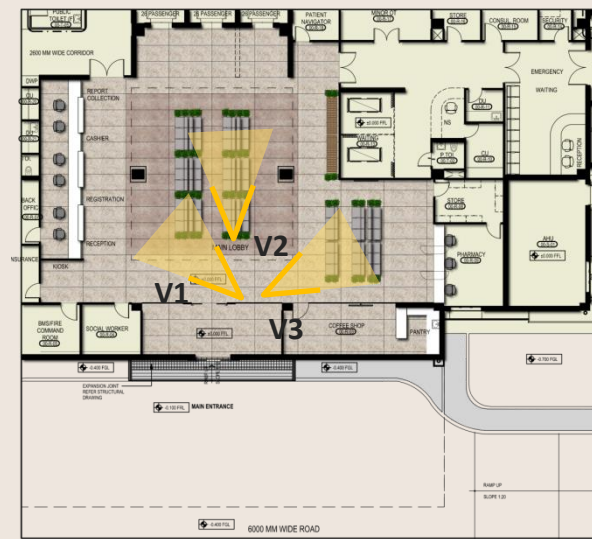
The arrangement of 48 seats is partly centralized creating maximum circulation space all around and partly tucked into the pharmacy area for an effective circulation.

Use of Bamboo and Metal in Murals









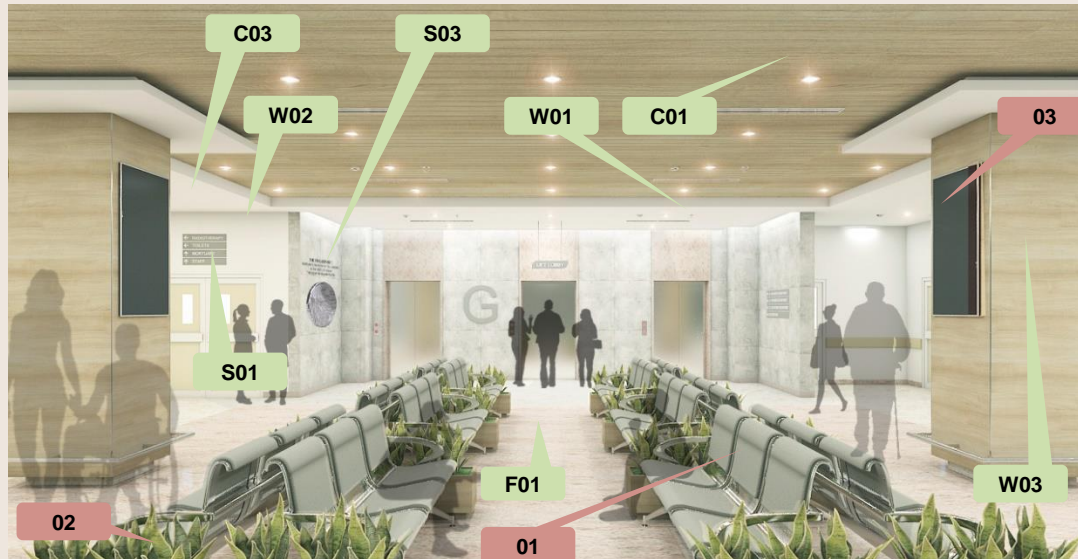
Scope of Works

C01 – Metal Perforated Ceiling
C03 - MR Gypsum Board Ceiling

F01 – Granite Flooring with Inlay

W01 – Granite / Slate Cladding
W02 – Acrylic Emulsion Paint Finish
W03 – Laminated Ply Panelling
FF01 – Reception Table

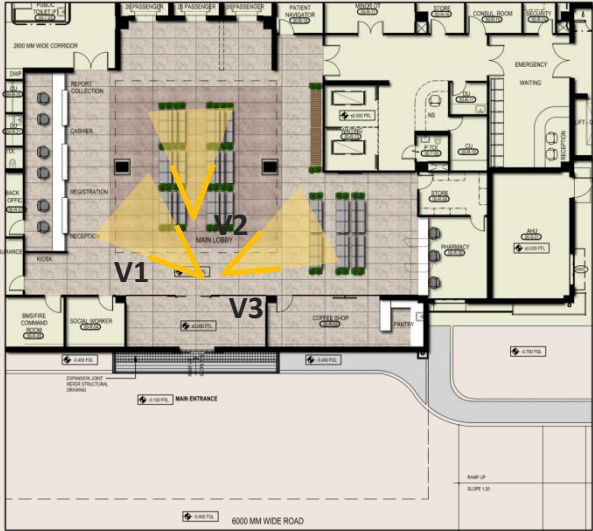
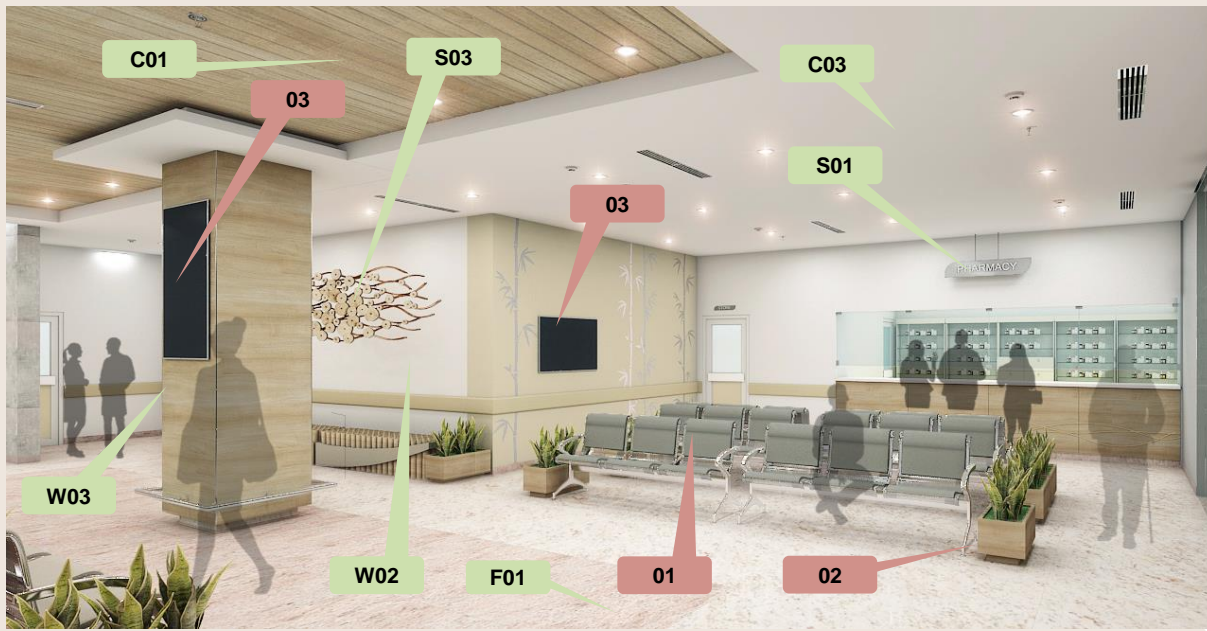
S01 – Signage
S02 – Logo
S03 – Wall Artwork/ Installation



Excluded from Scope

1. Lobby Seating
2. Planter Box (Artificial Plants)
3. LED Display
4. KIOSK

GENERAL FITOUTS, ELEVATOR, MEDICAL EQUIPMENT, DESIGNER FURNITURE, DECORATIVE LIGHTING, ARCHITECTURAL LIGHTING, MEP EQUIPMENT, ETC NOT IN SCOPE.



Scope of Works

C01 – Metal Perforated Ceiling
C03 - MR Gypsum Board Ceiling
C05 – Laminated Ply Ceiling

F01 – Granite Flooring with Inlay

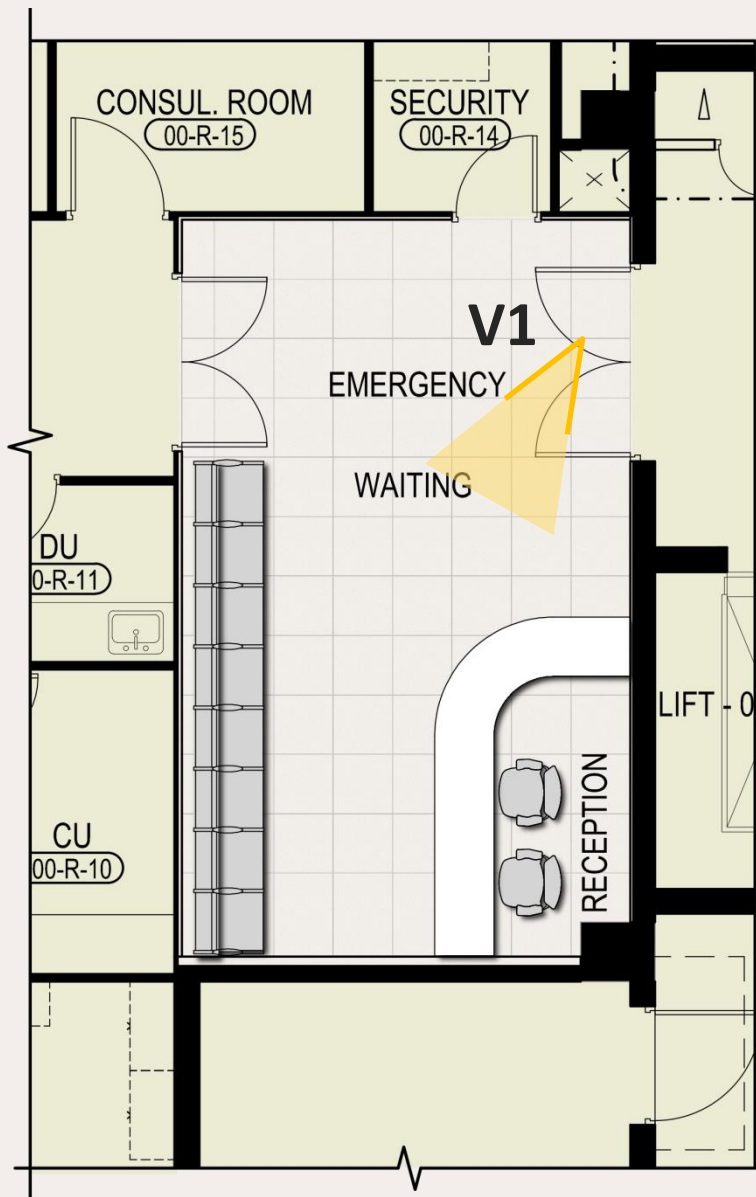
W01 – Granite / Slate Cladding
W02 – Acrylic Emulsion Paint Finish
W03 – Laminated Ply Panelling

S01 – Signage
S03 – Wall Artwork/ Installation

Excluded from Scope

1. Lobby Seating
2. Planter Box (Artificial Plants)
3. LED Display

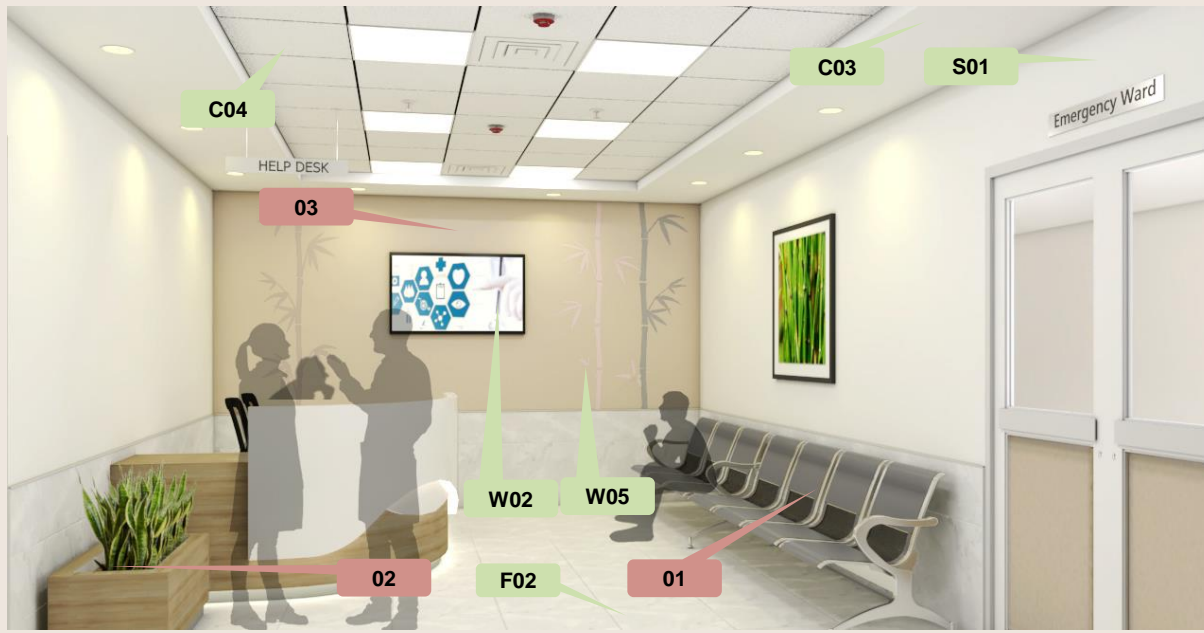
GENERAL FITOUTS, ELEVATOR, MEDICAL EQUIPMENT, DESIGNER FURNITURE, DECORATIVE LIGHTING, ARCHITECTURAL LIGHTING, MEP EQUIPMENT, ETC NOT IN SCOPE.



The Emergency Lobby Reception Table design is carried over from the reception and the stripes of paint in accent colours are applied on certain walls to accentuate them which is an abstract representation of bamboo.







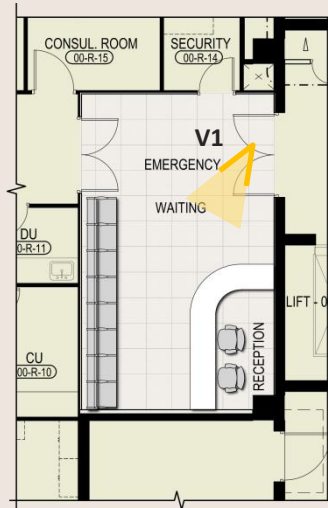
Scope of Works

C03 – MR Gypsum Board Ceiling
C04 – Mineral Fibre Acoustic Ceiling Tiles

F02 – 600x600mm Vitrified Tile Flooring
(Base + Highlighter)

W02 – Acrylic Emulsion Paint Finish
W05 – 600x600mm Tile Dado

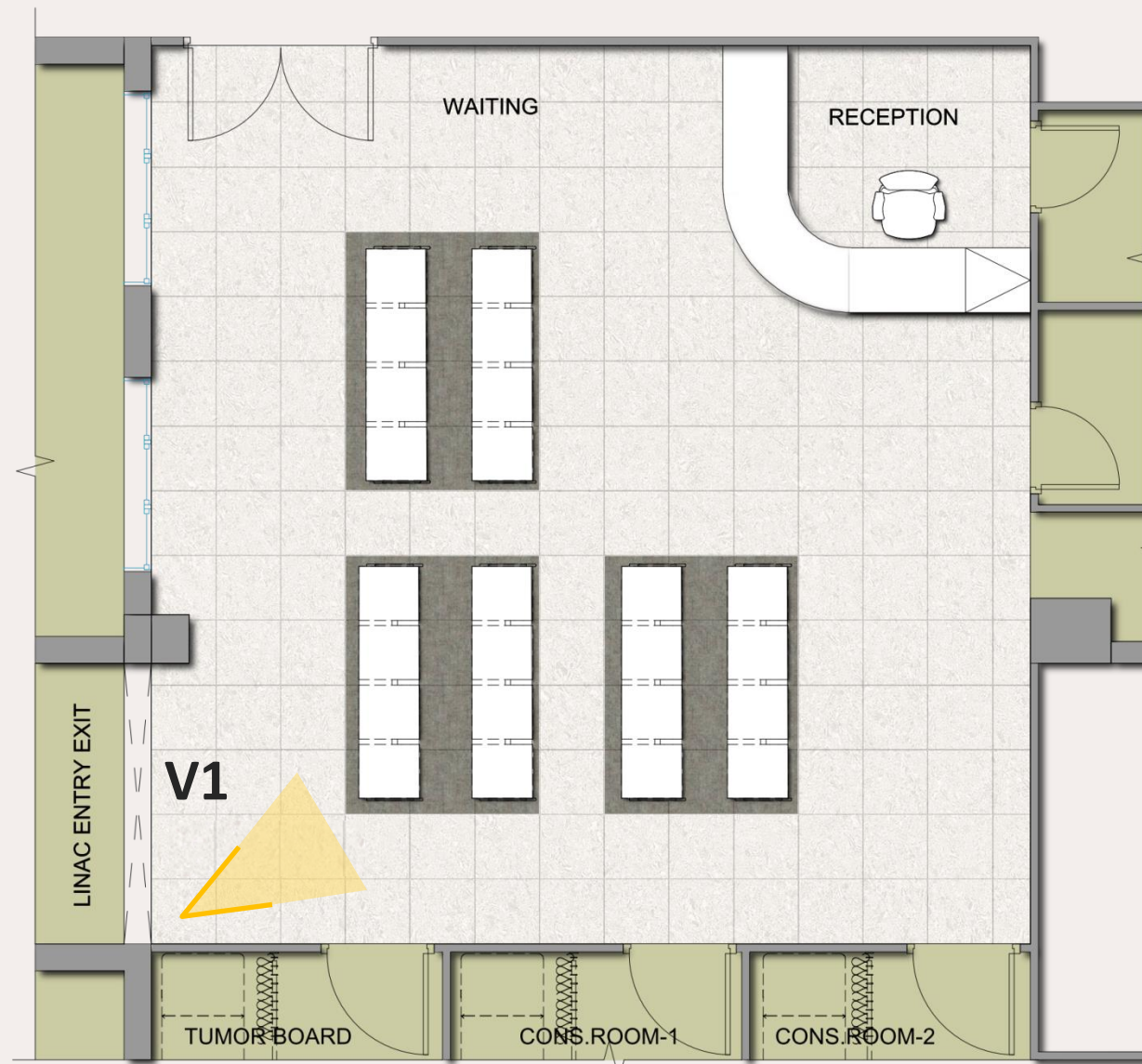
S01 – Signage



Excluded from Scope

1. Lobby Seating
2. Planter Box (Artificial Plants)
3. LED Display

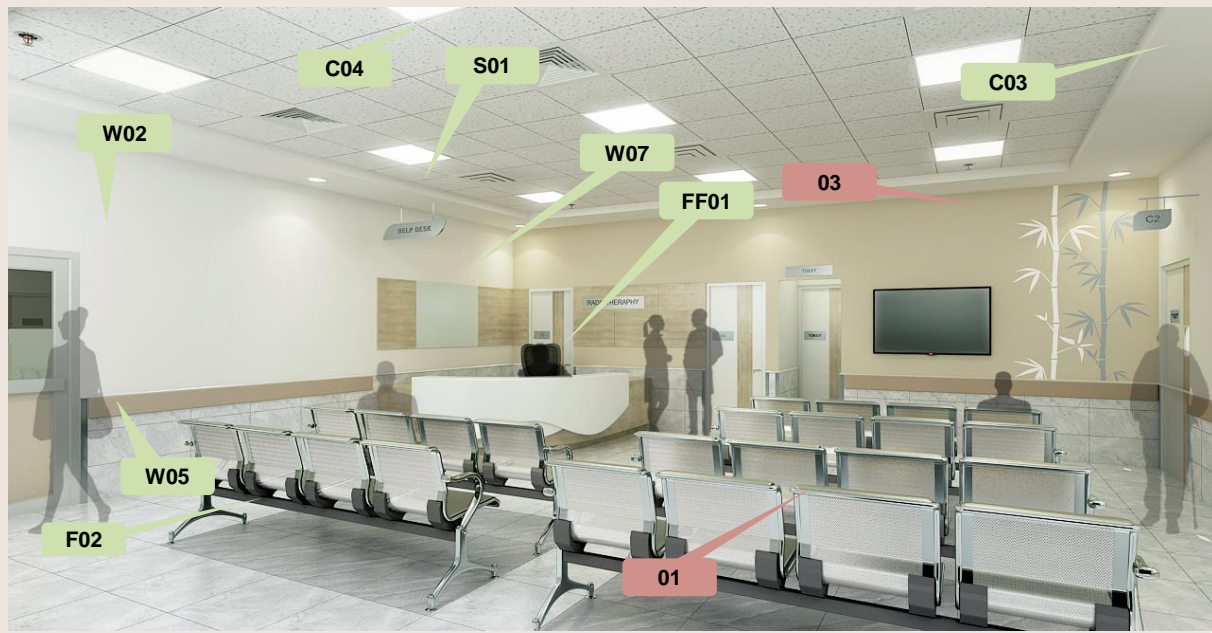
GENERAL FITOUTS, ELEVATOR, MEDICAL EQUIPMENT, DESIGNER FURNITURE, DECORATIVE LIGHTING, ARCHITECTURAL LIGHTING, MEP EQUIPMENT, ETC NOT IN SCOPE.



The Radiotherapy Lobby Reception Table design is carried over from the reception and application of accent paint as abstract bamboo art is seen to accentuate walls.







Scope of Works

C03 – MR Gypsum Board Ceiling
 C04 – Mineral Fibre Acoustic Ceiling Tiles

F02 – 600x600mm Vitrified Tile Flooring
 (Base + Highlighter)

W02 – Acrylic Emulsion Paint Finish
 W05 – 600x600mm Tile Dado W/ Granite
 Trim

W07 – Lacquer Glass / Pin-up Board

FF01 – Reception Table

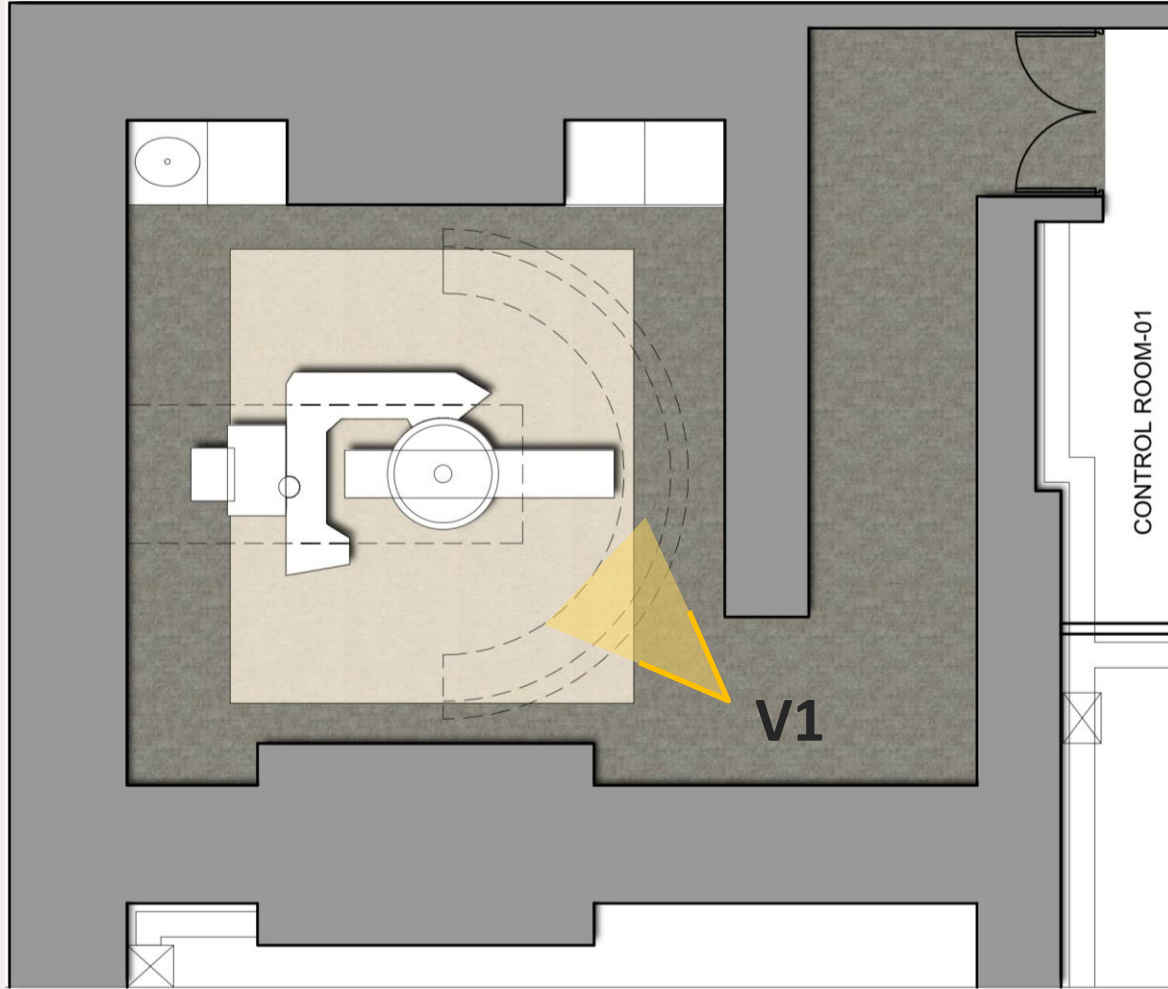
S01 – Signage



Excluded from Scope

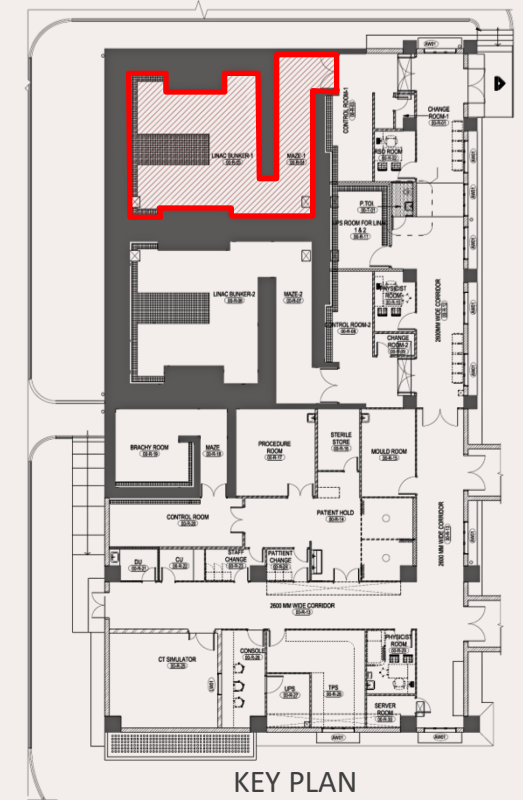
1. Lobby Seating
2. Planter Box (Artificial Plants)
3. LED Display

GENERAL FITOUTS, ELEVATOR, MEDICAL EQUIPMENT, DESIGNER FURNITURE, DECORATIVE LIGHTING, ARCHITECTURAL LIGHTING, MEP EQUIPMENT, ETC NOT IN SCOPE.

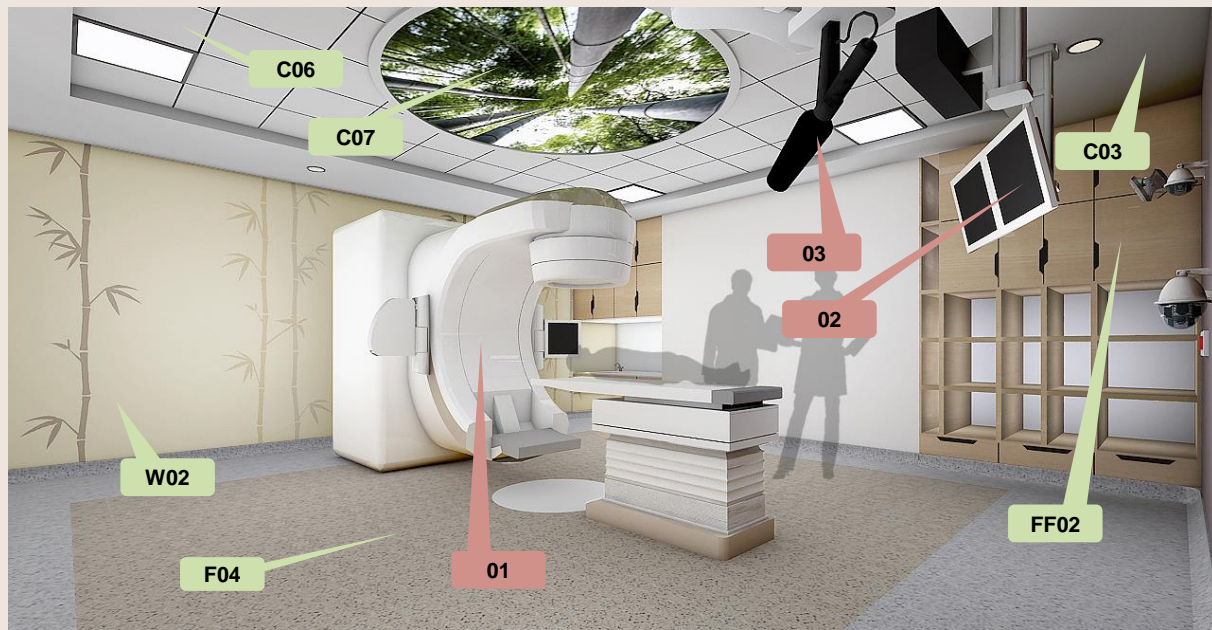


The Linac Bunker design I is minimalistic with the stripes of paint in accent colours applied on the rear wall to accentuate it, which is an abstract representation of bamboo.

The Stretch ceiling is a visual treat of worm's eye view of a bamboo plant







Scope of Works

C03 – MR Gypsum Board Ceiling

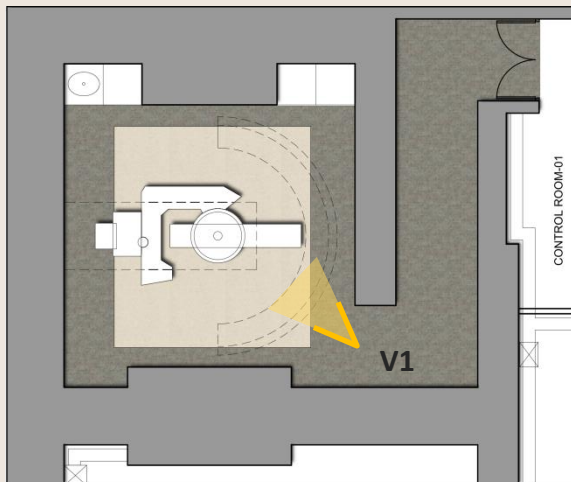
C06 – Metal Ceiling Tiles

C07 – Stretch Ceiling

F04 – Anti Static Vinyl Flooring
(Base + Highlighter)

W02 – Acrylic Emulsion Paint Finish

FF02 – Storage Unit



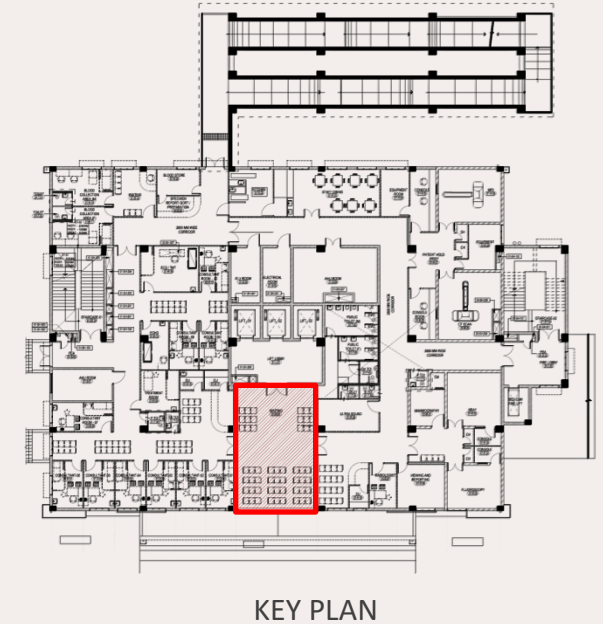
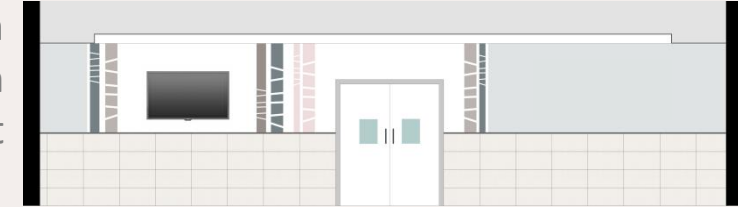
Excluded from Scope

1. All Medical Equipment
2. LED Displays
3. Cameras / Mics

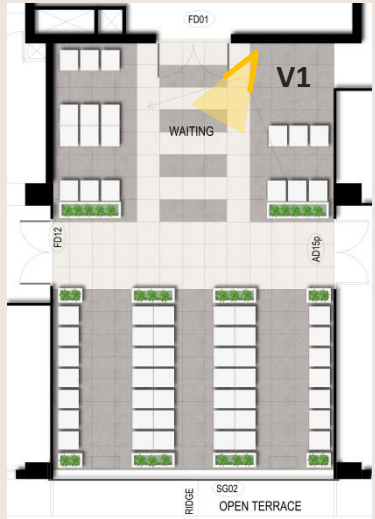
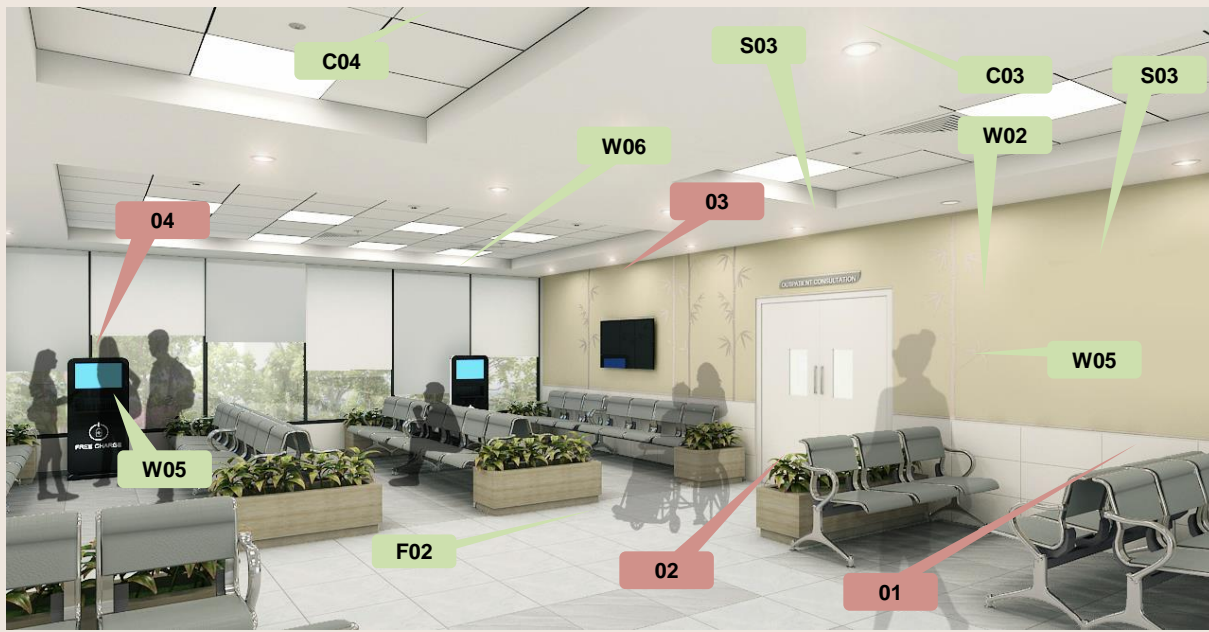
GENERAL FITOUTS, ELEVATOR, MEDICAL EQUIPMENT, DESIGNER FURNITURE, DECORATIVE LIGHTING, ARCHITECTURAL LIGHTING, MEP EQUIPMENT, ETC NOT IN SCOPE.



Flooring pattern creates a sense of direction for the general public to the consultation rooms. The design is minimal with accent paint stripes and a large wall mural







GENERAL FITOUTS, ELEVATOR, MEDICAL EQUIPMENT, DESIGNER FURNITURE, DECORATIVE LIGHTING, ARCHITECTURAL LIGHTING, MEP EQUIPMENT, ETC NOT IN SCOPE.

Scope of Works

C03 – MR Gypsum Board Ceiling
C04 – Mineral Fibre Acoustic Ceiling Tiles

F02 – 600x600mm Vitrified Tile Flooring
(Base + Highlighter)

W02 – Acrylic Emulsion Paint Finish
W05 – 600x600mm Tile Dado W/ Granite
Trim

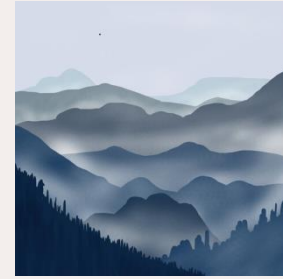
W06 – Roller Blinds W/ Print

S01 – Signage

S03 – Wall Artwork / Installation

Excluded from Scope

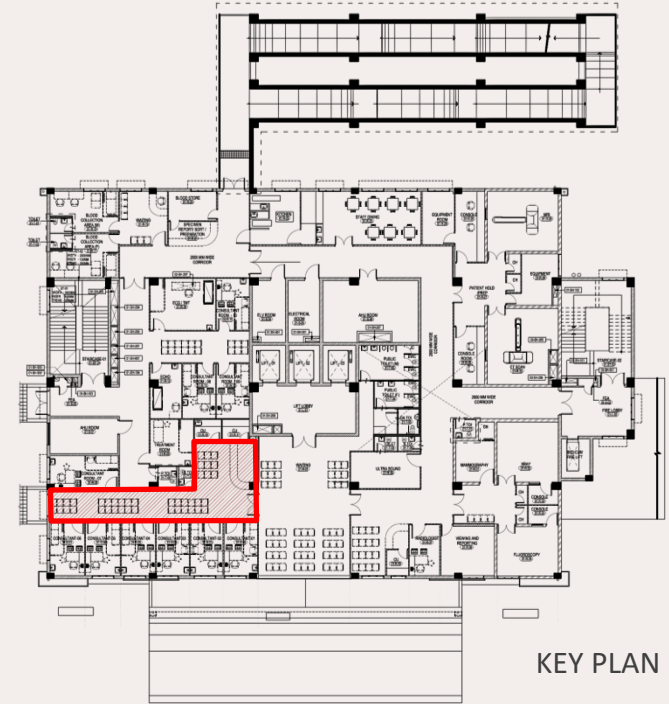
1. Lobby Seating
2. Planter Box (Artificial Plants)
3. LED Display
4. Charging Points



Wall artwork in multiple shades of blue depicting the mountains and water bodies.



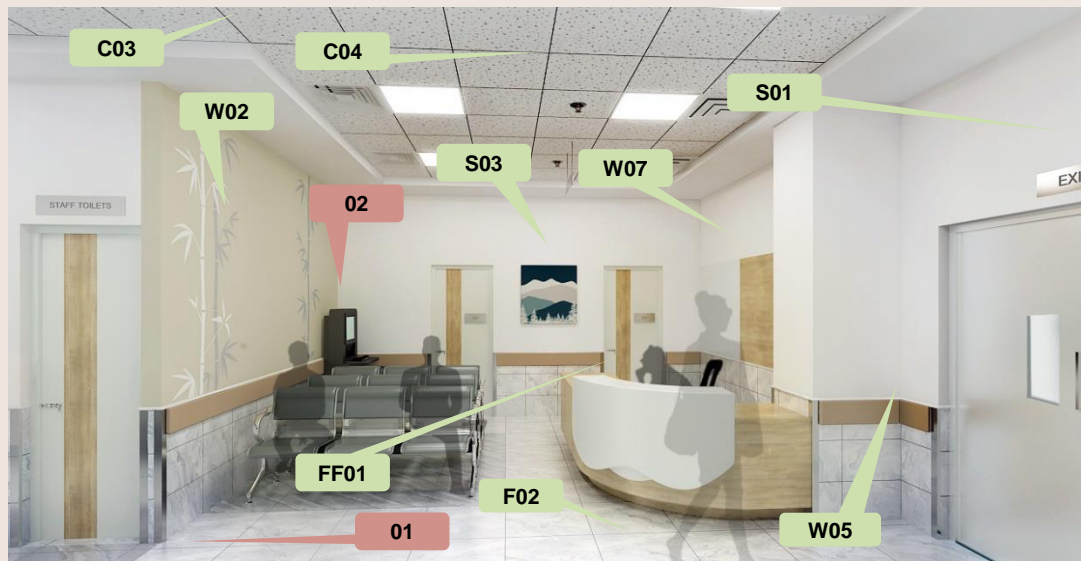
The stripes of paint in accent colours applied on the rear wall to accentuate it, which is an abstract representation of bamboo.



KEY PLAN







Scope of Works

C03 – MR Gypsum Board Ceiling
C04 – Mineral Fibre Acoustic Ceiling Tiles

F02 – 600x600mm Vitrified Tile Flooring
(Base + Highlighter)

W02 – Acrylic Emulsion Paint Finish
W05 – 600x600mm Tile Dado W/ Granite
Trim

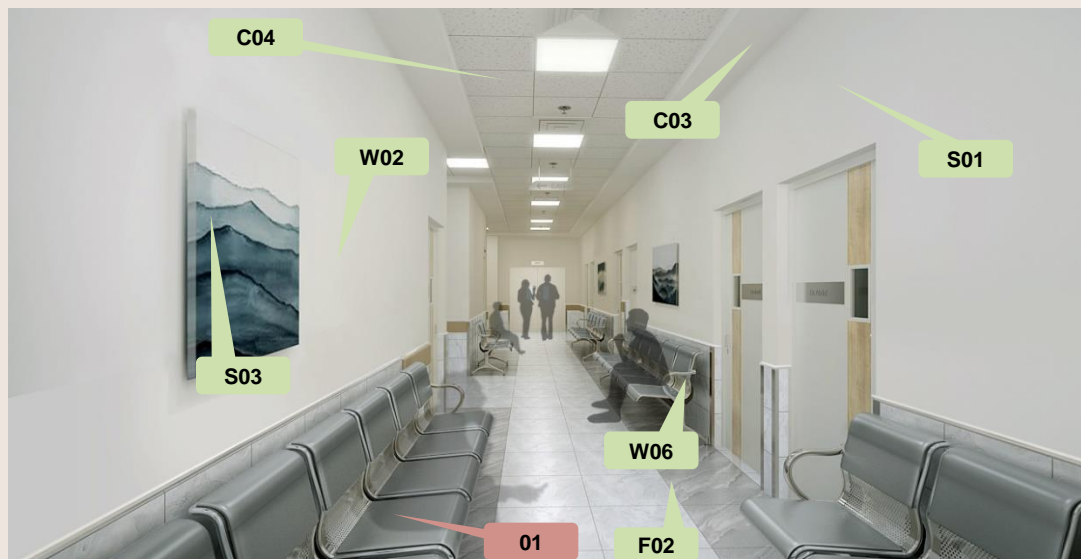
W07 – Lacquer Glass / Pin-up Board

FF01 – Reception Table

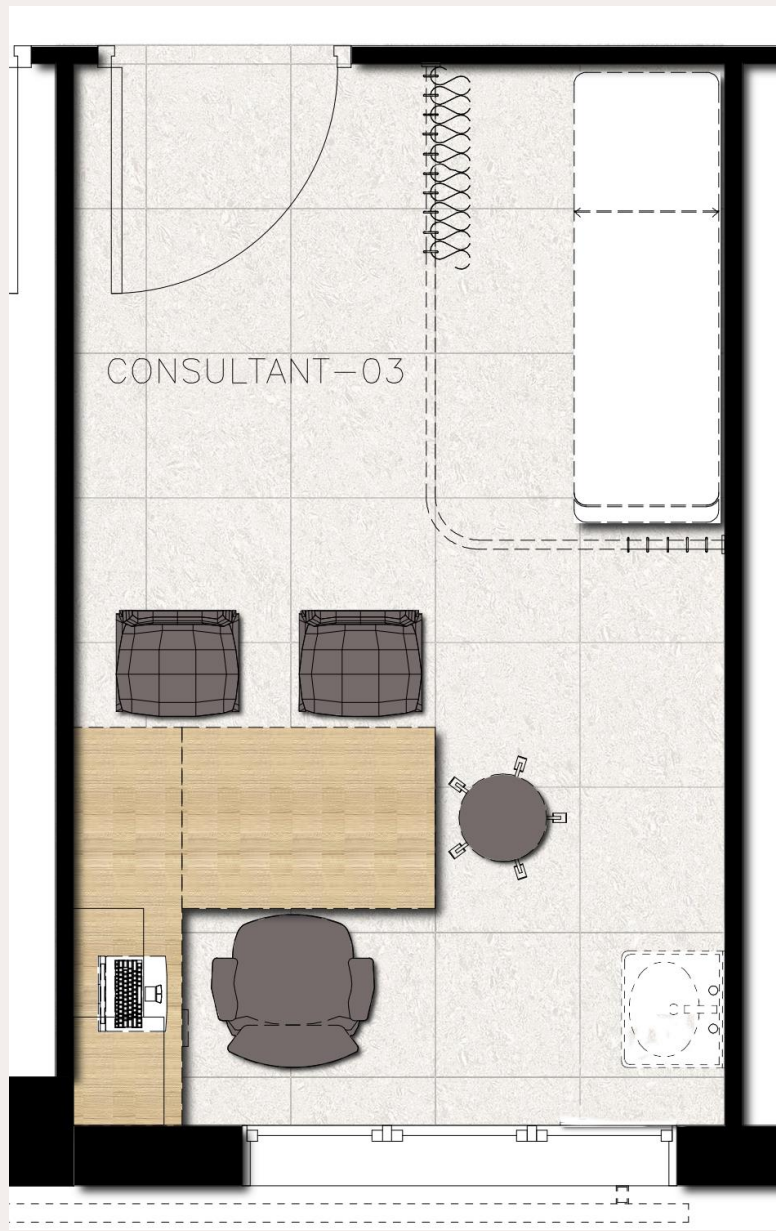
S01 – Signage
S03 – Wall Artwork / Installation

Excluded from Scope

1. Lobby Seating
2. Charging Points



GENERAL FITOUTS, ELEVATOR, MEDICAL EQUIPMENT, DESIGNER FURNITURE, DECORATIVE LIGHTING, ARCHITECTURAL LIGHTING, MEP EQUIPMENT, ETC NOT IN SCOPE.



The Consultation room design is minimalistic-

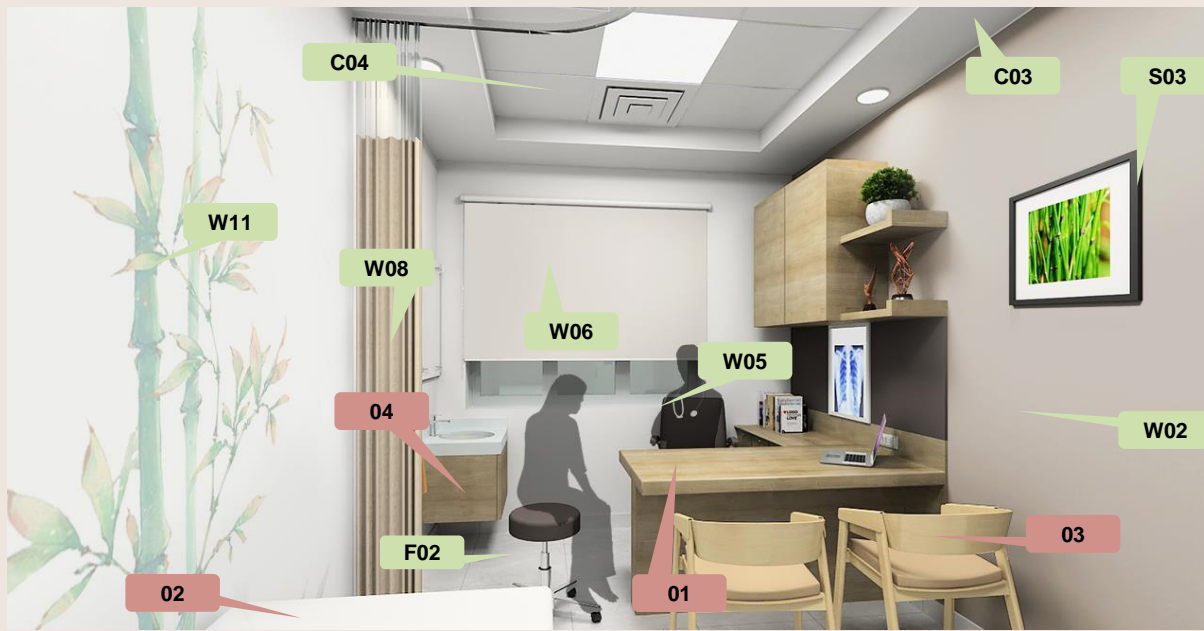
With A large wall vinyl wall feature which follows the general palette and accent paints and floor tiles are used.

An artist's painting also accentuates the doctor's workstation .



KEY PLAN





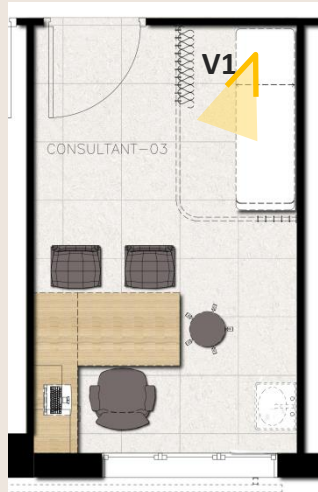
Scope of Works

C03 – MR Gypsum Board Ceiling
C04 – Mineral Fibre Acoustic Ceiling Tiles

F02 – 600x600mm Vitrified Tile Flooring
(Base + Highlighter)

W02 – Acrylic Emulsion Paint Finish
W06 – Roller Blinds W/ Print
W08 – Curtain Partition
W11 – Wall Vinyl Artwork

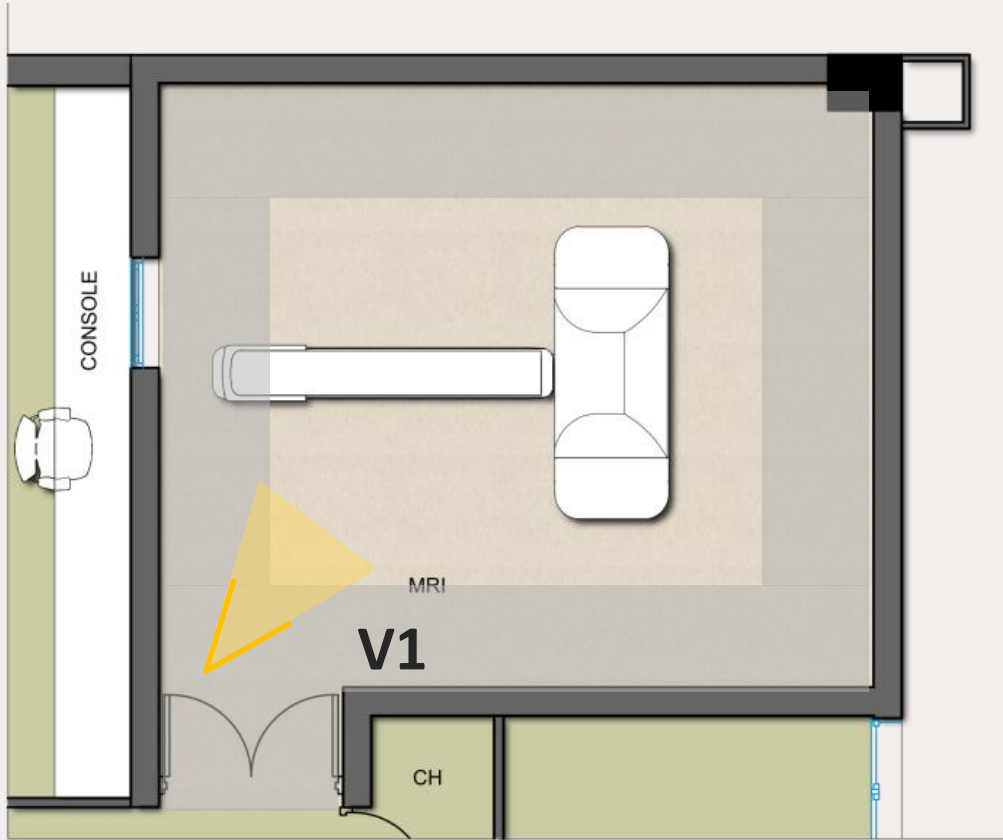
S01 – Signage
S03 – Wall Artwork / Installation



Excluded from Scope

1. Doctor's Workstation
2. Examination Bed
3. Doctor / Visitor Chairs
4. Plumbing Fixtures

GENERAL FITOUTS, ELEVATOR, MEDICAL EQUIPMENT, DESIGNER FURNITURE, DECORATIVE LIGHTING, ARCHITECTURAL LIGHTING, MEP EQUIPMENT, ETC NOT IN SCOPE.

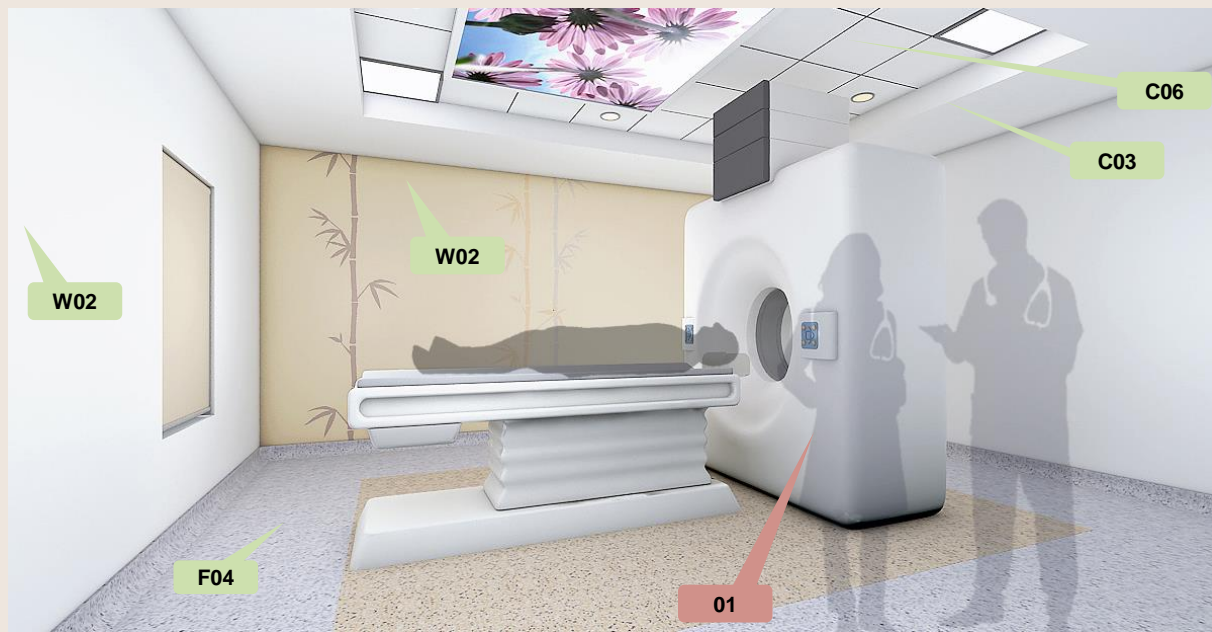


The MRI SCAN ROOM design is minimalistic with the stripes of paint in accent colours applied on the rear wall to accentuate it, which is an abstract representation of bamboo.



KEY PLAN



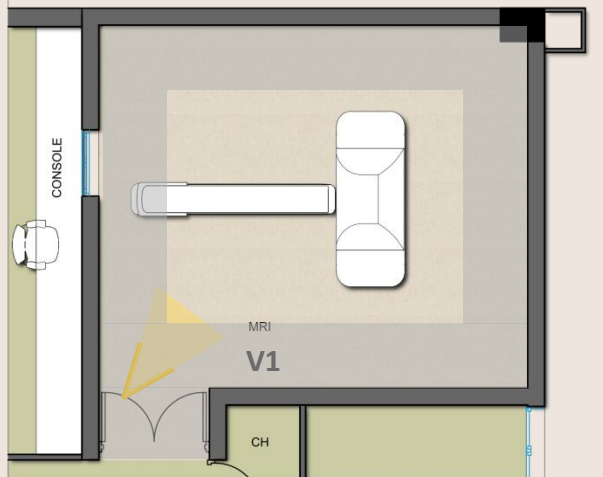


Scope of Works

C03 – MR Gypsum Ceiling
 C06 – Mineral Fibre Acoustic Ceiling Tiles
 C07 – Stretch Ceiling

F04 – Anti Static Vinyl Flooring

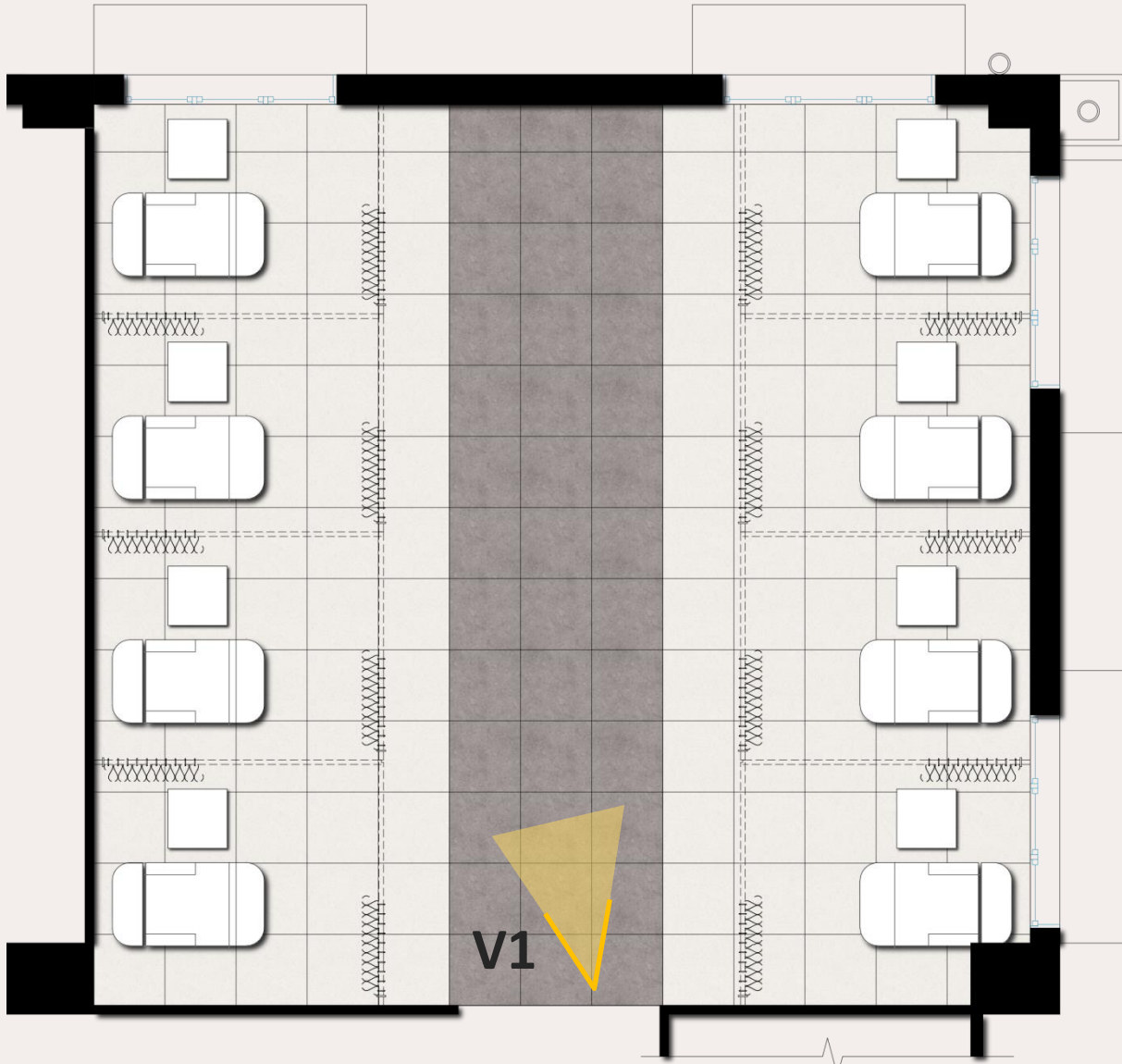
W02 – Acrylic Emulsion Paint Finish



Excluded from Scope

1. All Medical Equipment

GENERAL FITOUTS, ELEVATOR, MEDICAL EQUIPMENT, DESIGNER FURNITURE, DECORATIVE LIGHTING, ARCHITECTURAL LIGHTING, MEP EQUIPMENT, ETC NOT IN SCOPE.



The Chemotherapy ward design is minimalistic-

With an accent paint strips which is an abstract form of bamboo.

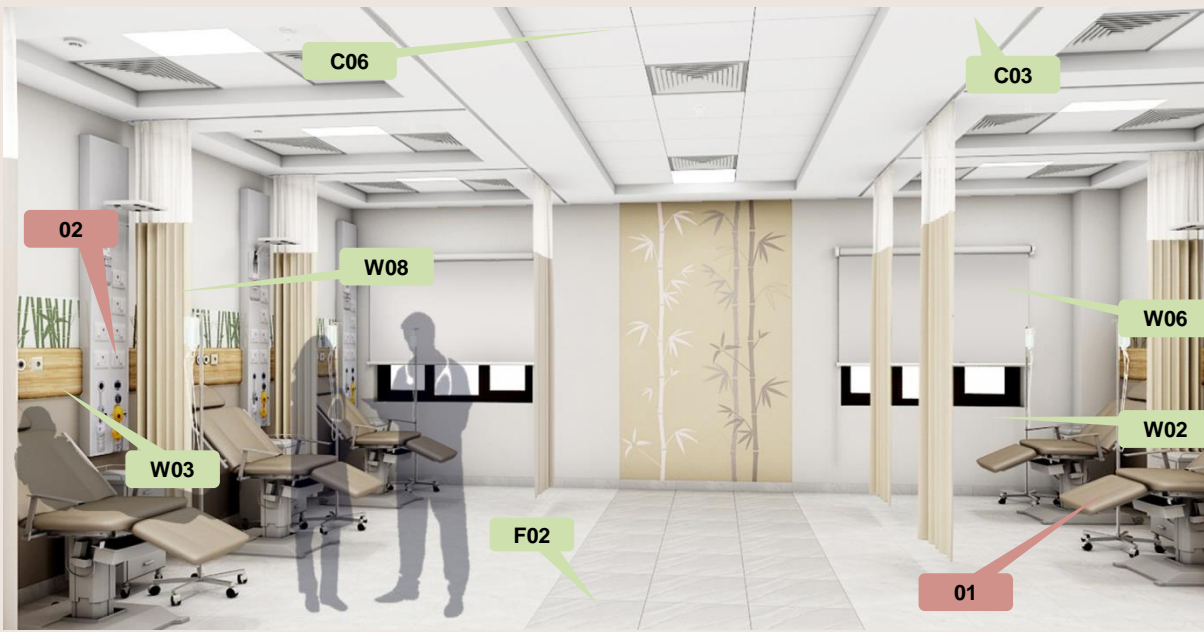
And bamboo artwork printed on blinds

The flooring creates a sense of division between circulation and patient's space.



KEY PLAN





Scope of Works

C03 – MR Gypsum Board Ceiling

C06 – Metal Ceiling Tiles

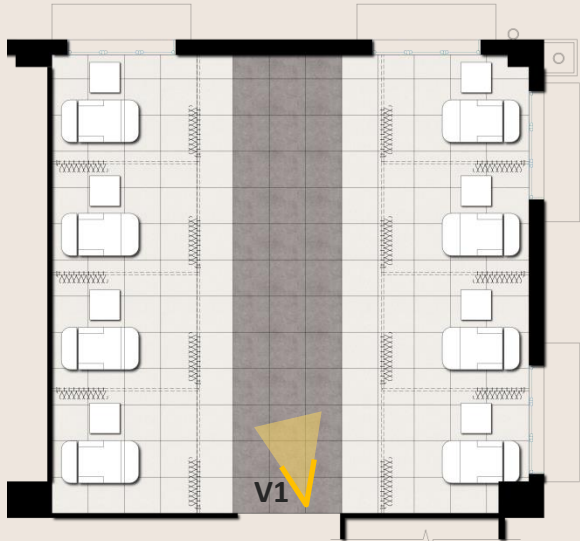
F02 – 600x600mm Vitrified Tile Flooring
(Base + Highlighter)

W02 – Acrylic Emulsion Paint Finish

W03 – Laminated Ply Paneling (Enclosing
Medical Panel)

W06 – Roller Blinds W/ Print

W08 – Curtain Partition



Excluded from Scope

1. Chemo Chair
2. Medical Equipment

GENERAL FITOUTS, ELEVATOR, MEDICAL EQUIPMENT, DESIGNER FURNITURE, DECORATIVE LIGHTING, ARCHITECTURAL LIGHTING, MEP EQUIPMENT, ETC NOT IN SCOPE.



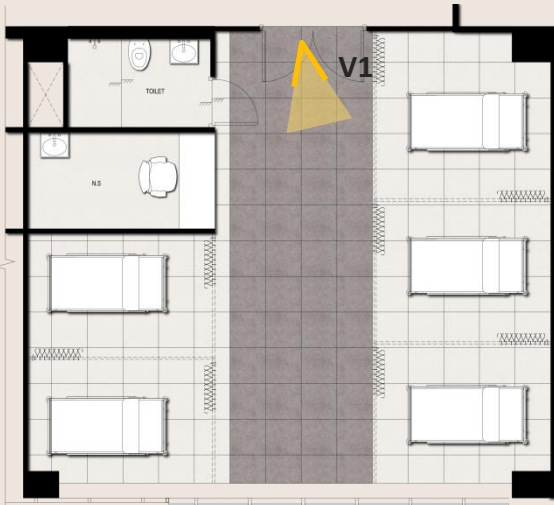
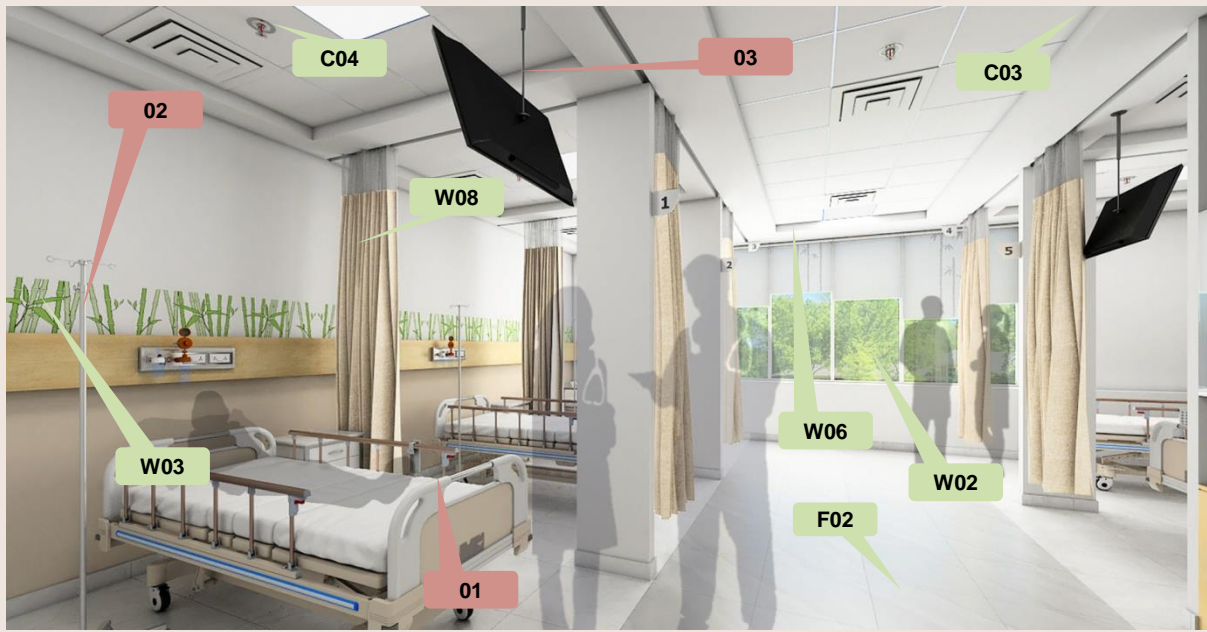
The General ward design is minimalistic with bamboo strip painted on wall and bamboo artwork printed on blinds

The flooring creates a sense of division between circulation and patient's space.



KEY PLAN





GENERAL FITOUTS, ELEVATOR, MEDICAL EQUIPMENT, DESIGNER FURNITURE, DECORATIVE LIGHTING, ARCHITECTURAL LIGHTING, MEP EQUIPMENT, ETC NOT IN SCOPE.

Scope of Works

C03 – MR Gypsum Board Ceiling
C04 – Mineral Fibre Acoustic Ceiling Tiles

F02 – 600x600mm Vitrified Tile Flooring
(Base + Highlighter)

W02 – Acrylic Emulsion Paint Finish
W03 – Laminated Ply Paneling
W06 – Roller Blinds W/ Print
W08 – Curtain Partition

FF03- Nurse's Table

Excluded from Scope

1. Bed
2. Medical Equipment
3. LED TV



THANK YOU