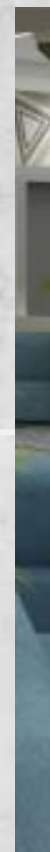




**ASSAM
CANCER CARE
FOUNDATION**

A Government of Assam
and TATA Trusts Initiative

DESIGN PRESENTATION

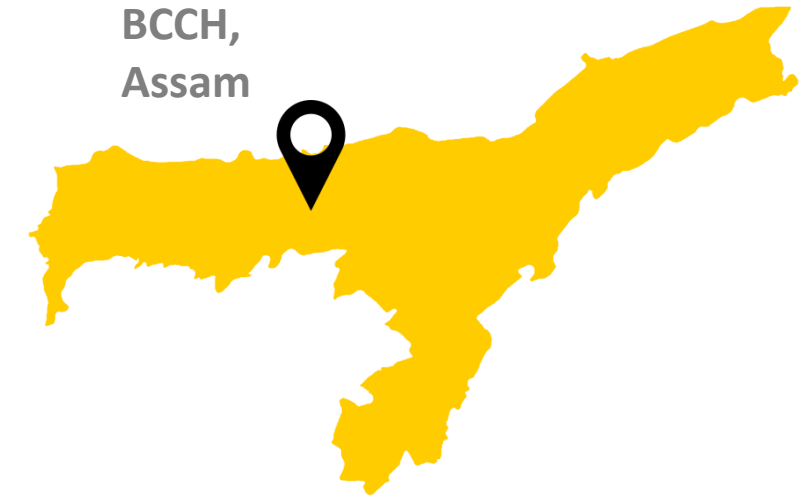


CONTENTS

LOCATION

DESIGN CONCEPT
MOODBOARD

RECEPTION / LOBBY
EMERGENCY LOBBY
RADIO THERAPY LOUNGE
LINAC BUNKER
OPD WAITING LOUNGE
OPD CORRIDOR
OPD CONSULTATION ROOM
CHEMOTHERAPY WARD
ICU WARD
IPD WAITING LOUNGE
GENERAL WARD
OPERATION THEATRE
SINGLE ROOM
CAFETERIA



Barpeta Cancer Care Hospital,
Assam.

RESILIENCE

The potential to recover quickly, adapt & overcome. This, we believe is the core characteristic of every cancer patient.

Trees are the epitome of Resilience. They either bend or break in a storm. But not without a fight.

The column is designed from the abstract form of a tree

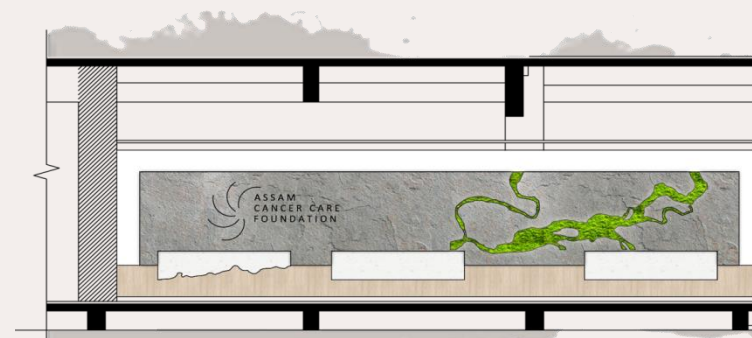


The ability to bounce back from hardship and spring up even in adversity.



Brahmaputra river course through Barpeta

Creating a focal point using the tree and its canopy.



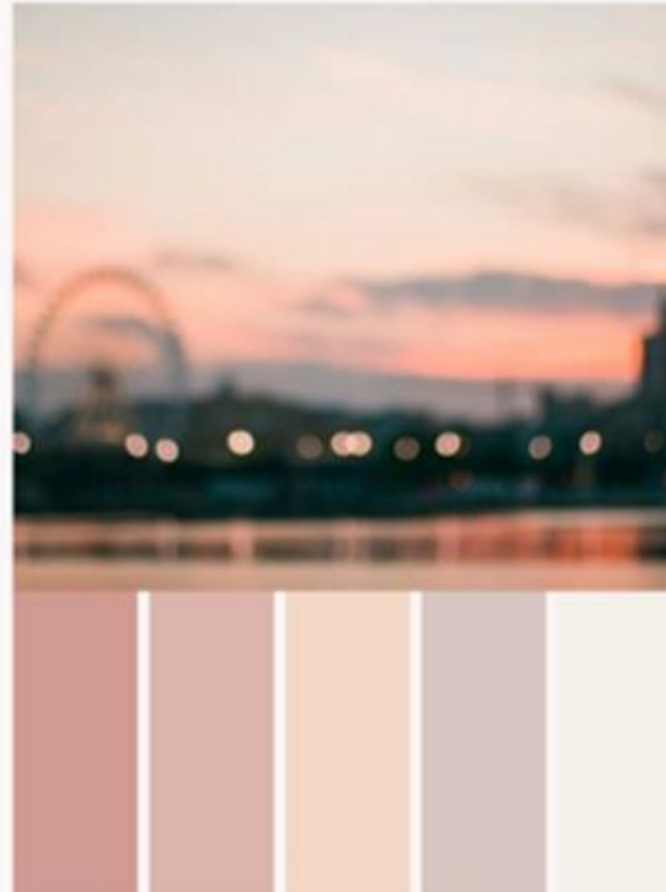
Natural textures like stone & wood resonate with the concept. The use of green panels, further emphasizes the concept.



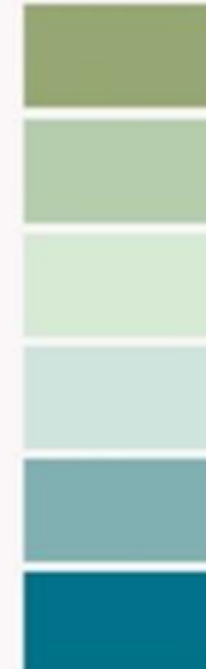
Abstract leaves of native Assamese trees like Hollong, Arecanut and Kurta are used in the wall graphics while Bamboo is used for the waiting benches.

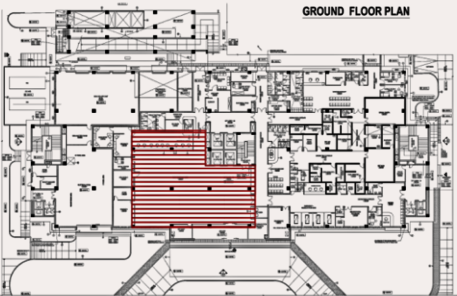
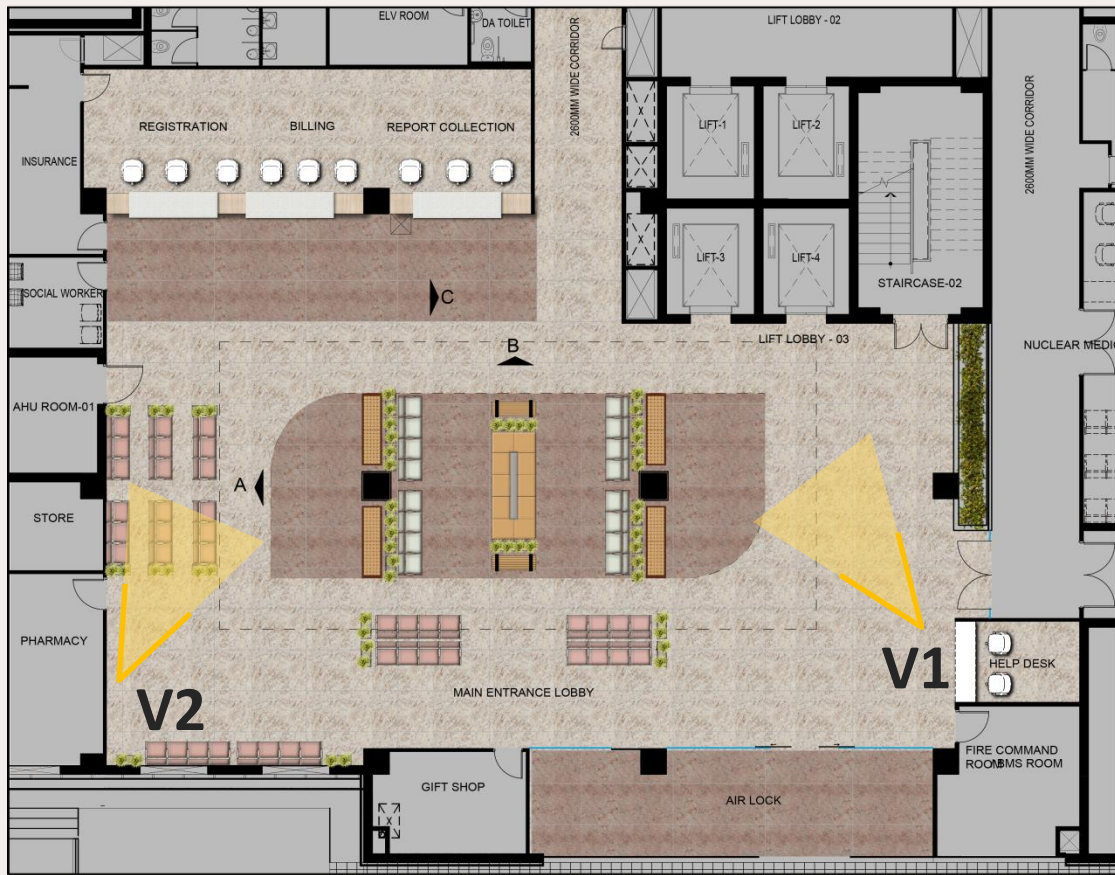


Vitrified tile and granite shades corresponding to the colour palette, are used for the flooring & inlay patterns.

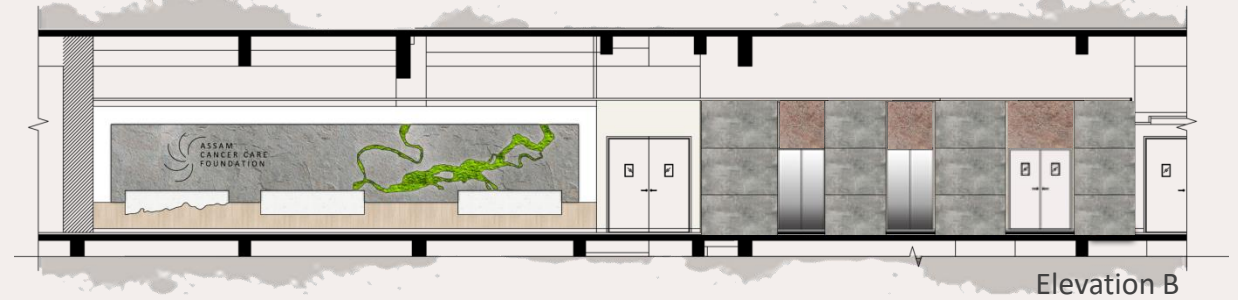


Hues of blue and green serve as accents, highlighting mural pieces.





A central focal point is created using the false ceiling, depicting two trees forming a canopy, below which the seating is arranged.



Asymmetrical and organic forms are most often thought of naturally occurring.

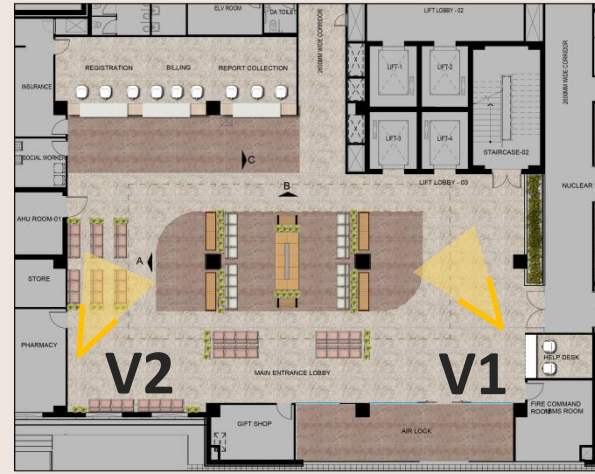
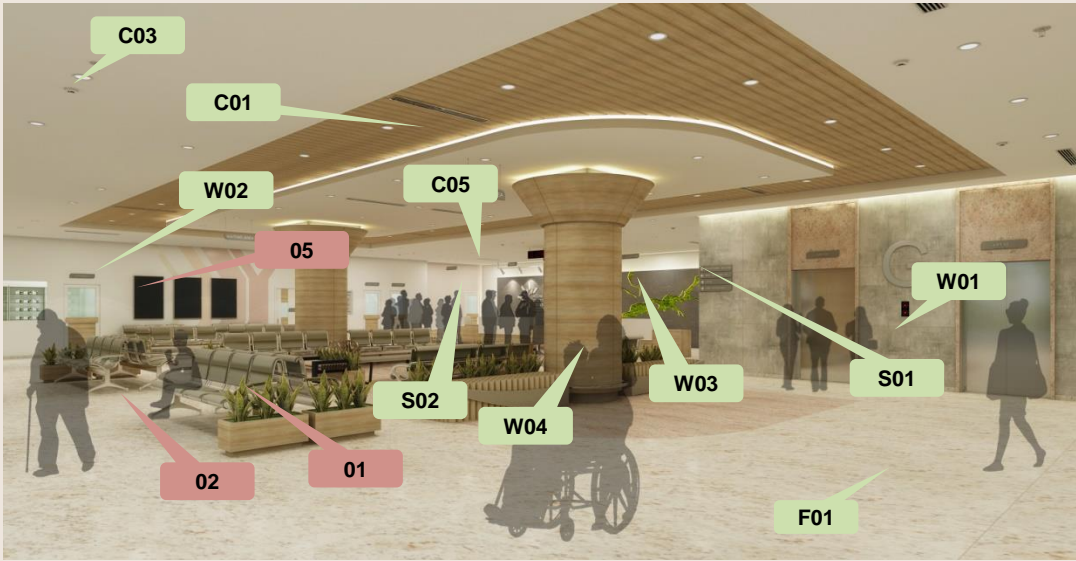


The flooring inlay, inspired from the growth pattern of a branch, creates a sense of direction towards the reception. This is also reflected in the ceiling.

The arrangement of 86 seats is centralized creating maximum circulation space all around.







Scope of Works

C01 – Metal Perforated Ceiling
 C03 - MR Gypsum Board Ceiling
 C04 - Mineral Fibre Acoustic Ceiling Tiles
 C05 – Laminated Ply Ceiling

F01 – Granite Flooring with Inlay

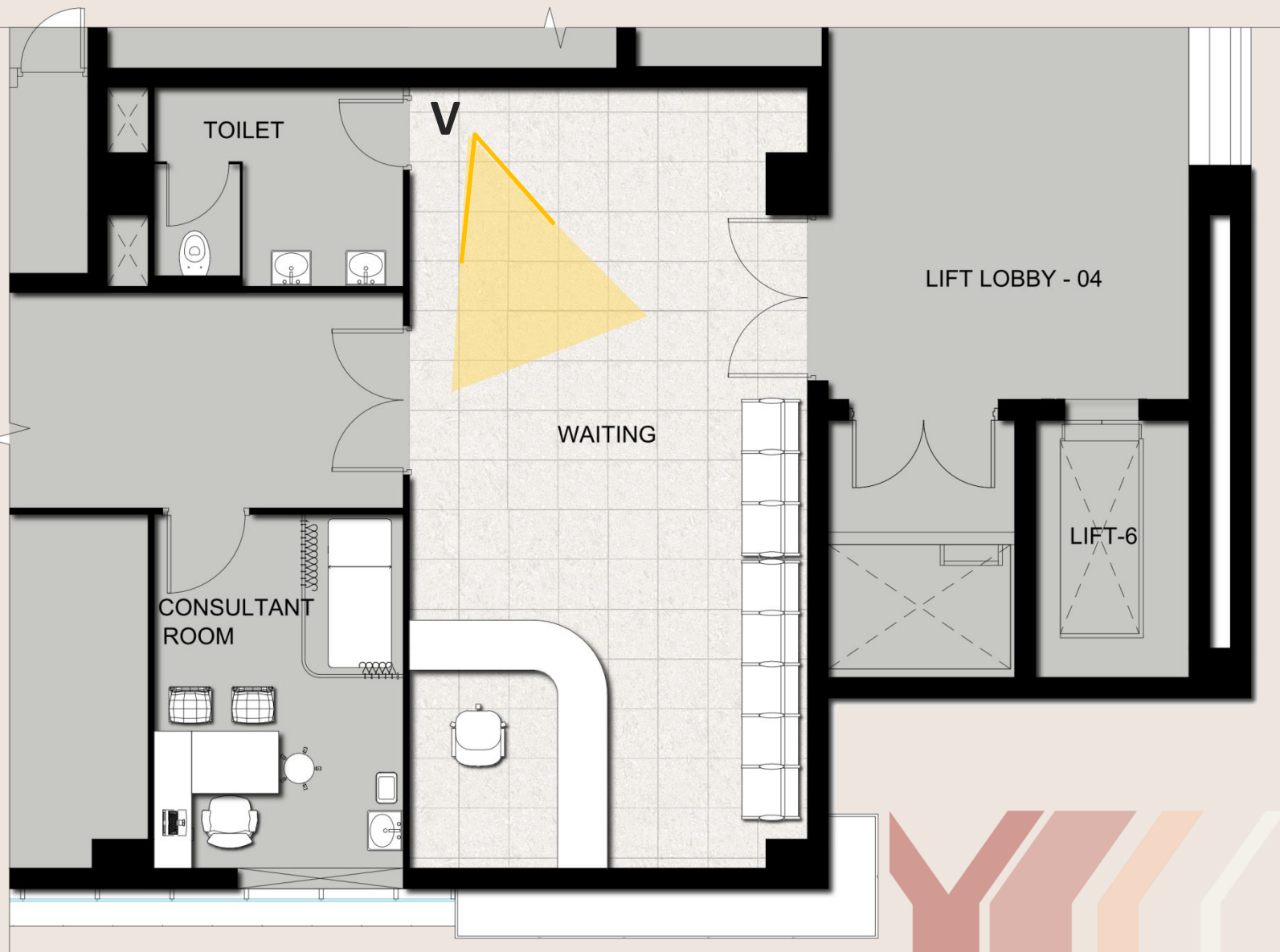
W01 – Granite / Slate Cladding
 W02 – Acrylic Emulsion Paint Finish
 W03 – Laminated Ply Panelling
 W04 – ACP Cladding with Flexi-Ply Backing
 FF01 – Reception Table

S01 – Signage
 S02 – Logo

Excluded from Scope

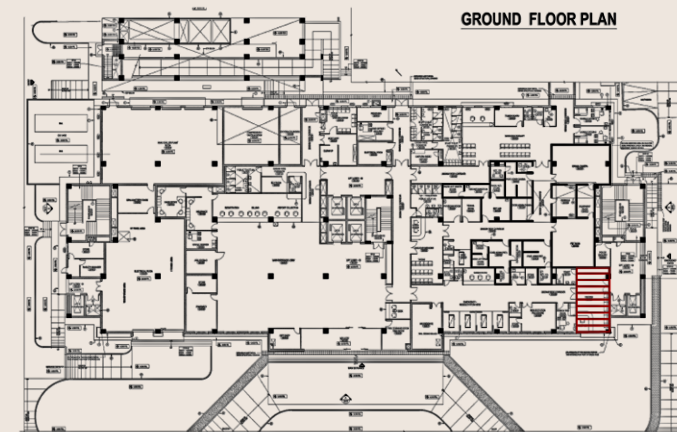
1. Lobby Seating
2. Planter Box (Artificial Plants)
3. LED Display

GENERAL FITOUTS, ELEVATOR, MEDICAL EQUIPMENT, DESIGNER FURNITURE, DECORATIVE LIGHTING, ARCHITECTURAL LIGHTING, MEP EQUIPMENT, ETC NOT IN SCOPE.

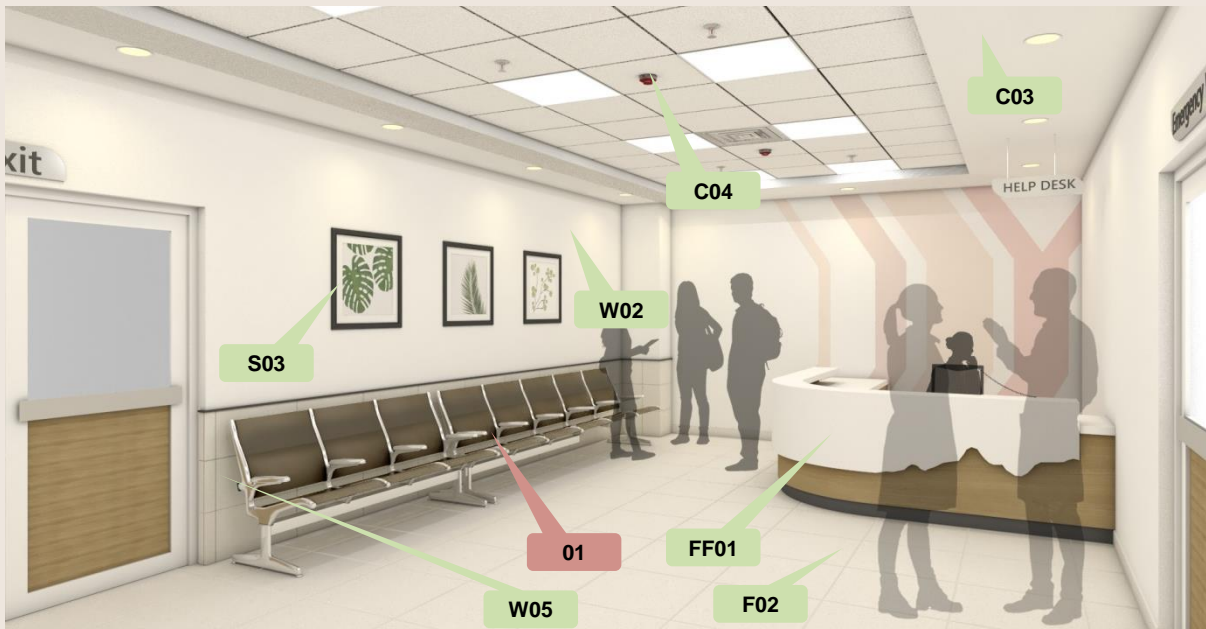


Wall graphics depicting indigenous foliage is a repeated element.

Paint murals reflecting abstract trees are elements that are repeated.







Scope of Works

C03 - MR Gypsum Board Ceiling

C04 - Mineral Fibre Acoustic Ceiling Tiles

F02 – 600mm x 600mm Tile flooring (Base+Highlighter)

W02 – Acrylic Emulsion Paint Finish

W05 – 600mm x 600mm Tile Cladding

FF01 – Reception Table

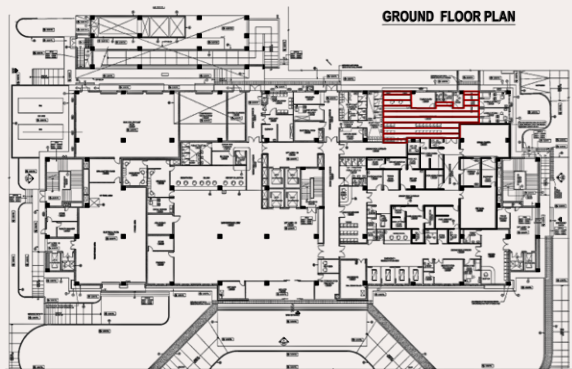
S01 – Signage

S03 – Wall Artwork / Installation



Excluded from Scope

1. Lobby Seating



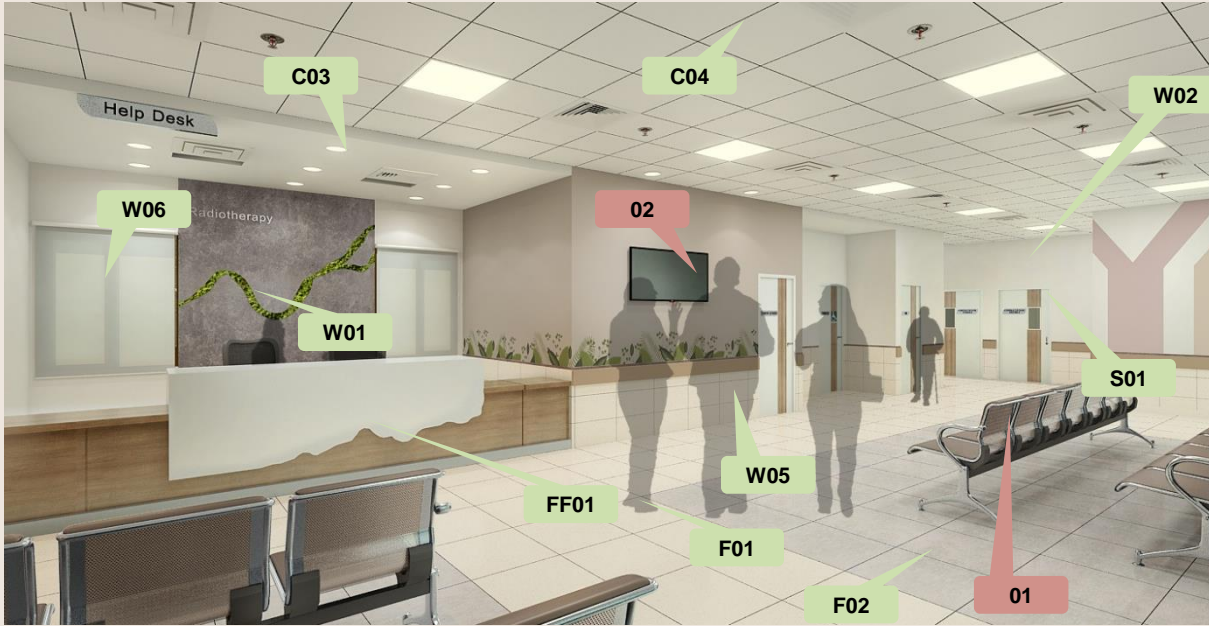
The flooring inlay design is based on the growth pattern of a branch, as seen in the Main Entrance Lobby.

The reception back panel is derived from the concept of the registration desk in the Main Entrance Lobby as well. All walls are tiled up to 900mm with a granite nosing. This serves as a wall guards.

Wall graphics depicting indigenous foliage and paint murals reflecting abstract trees are elements that are repeated.







Scope of Works

C03 - MR Gypsum Board Ceiling

C04 - Mineral Fibre Acoustic Ceiling Tiles

F01 – Granite Flooring with Inlay

F02 – 600mm x 600mm Tile flooring (Base+Highlighter)

W01 – Granite / Slate Cladding

W02 – Acrylic Emulsion Paint Finish

W05 – 600mm x 600mm Tile Cladding with 40mm Granite Trim

W06 – Roller Blinds

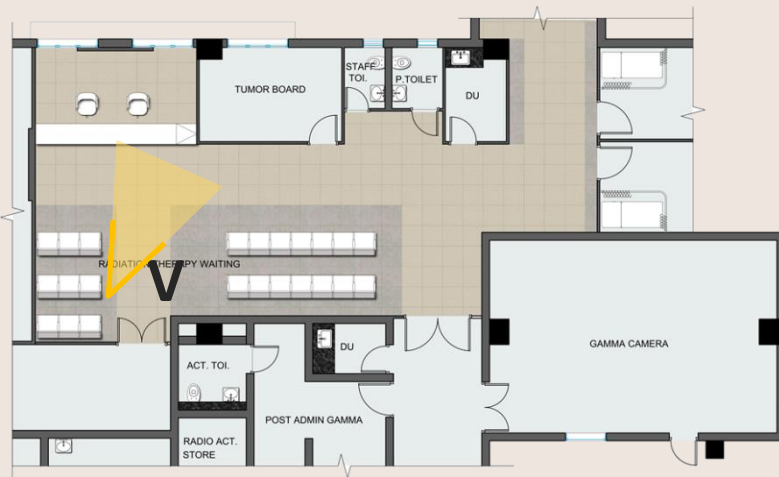
FF01 – Reception Table

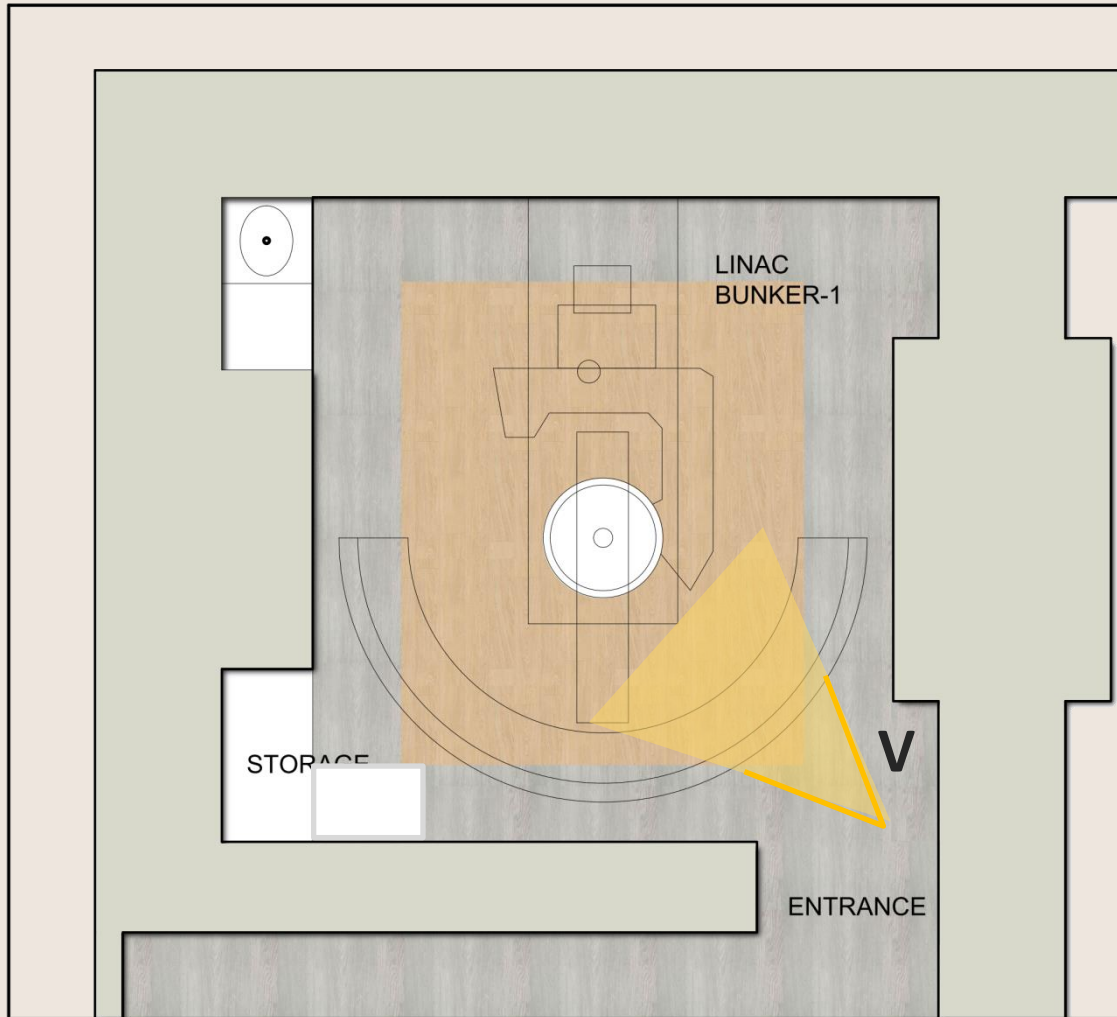
S01 – Signage

S02 – Logo

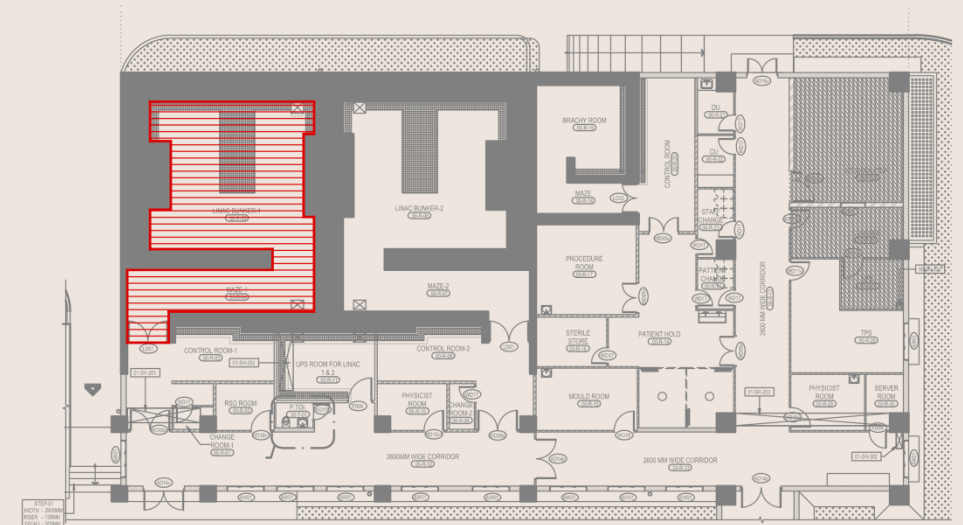
Excluded from Scope

1. Lobby Seating
2. LED Display

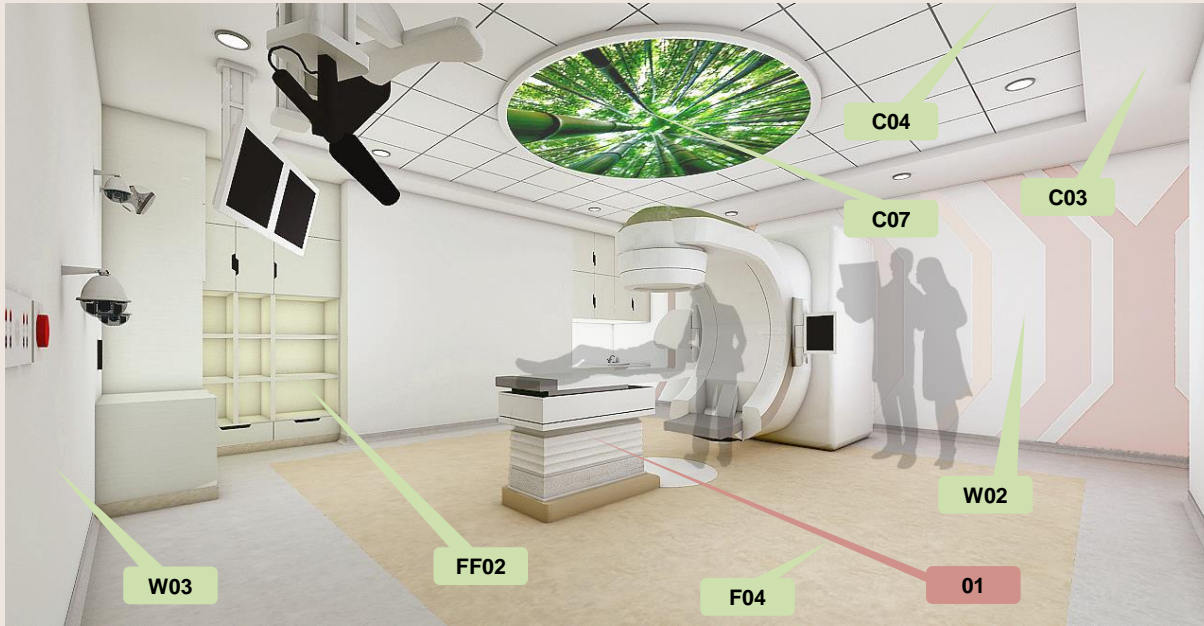




The Triangulation is seen in the floor in the form of vinyl pattern inspired from the concept of HOPE







Scope of Works

C03 - MR Gypsum Board Ceiling

C06 - Metal Ceiling

C07 – Stretch Ceiling

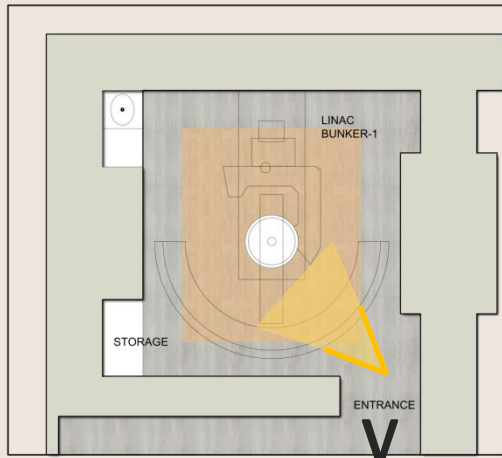
F04 – Vinyl Flooring

W02 – Acrylic Emulsion Paint Finish

W03 – Laminated Ply Panelling

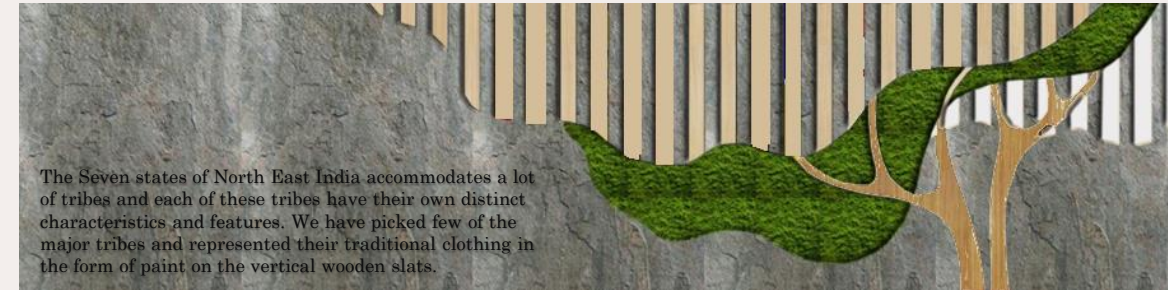
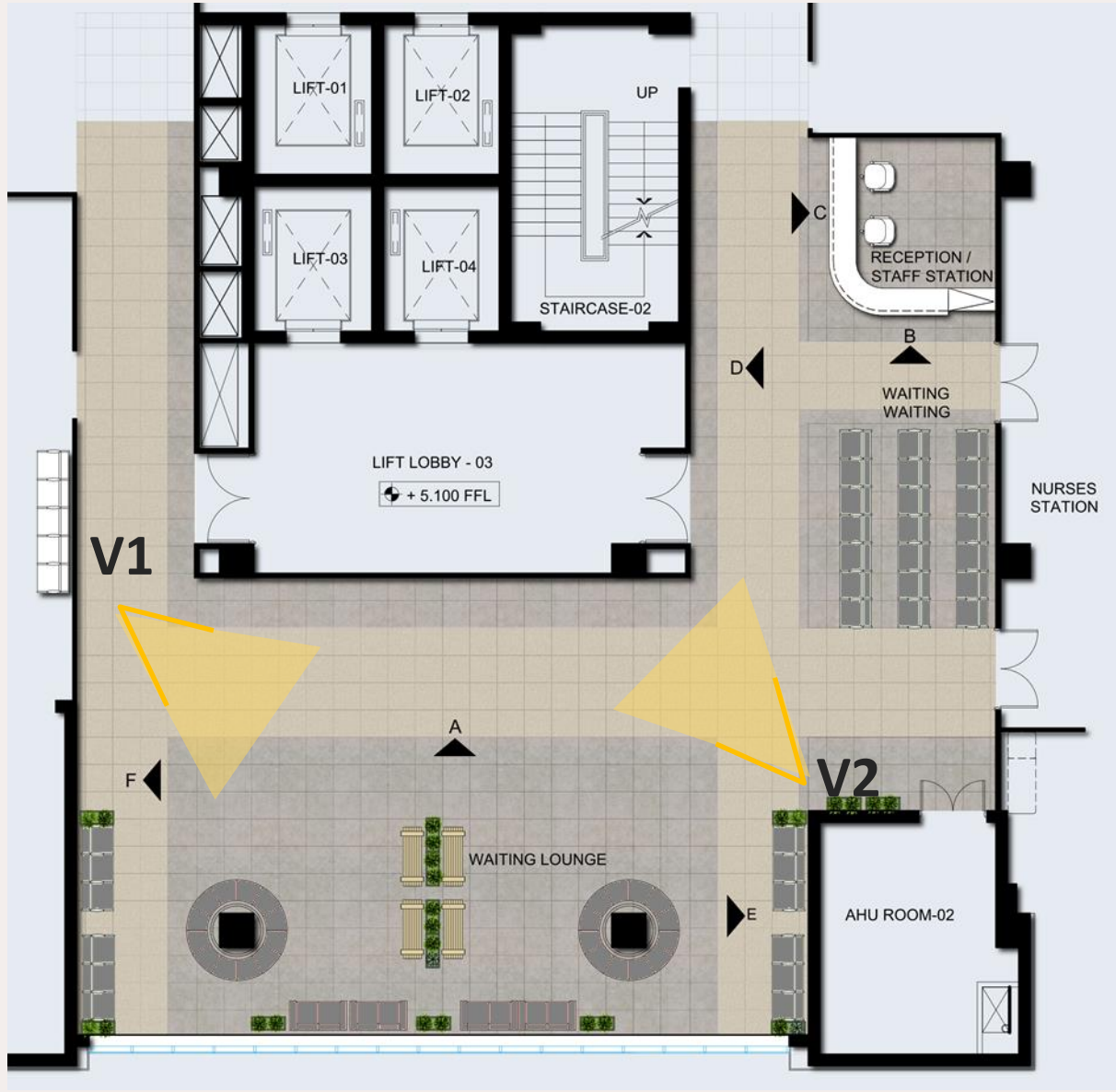
FF02 – Storage Unit

S03 – Wall Artwork / Installation



Excluded from Scope

1. Medical Equipment

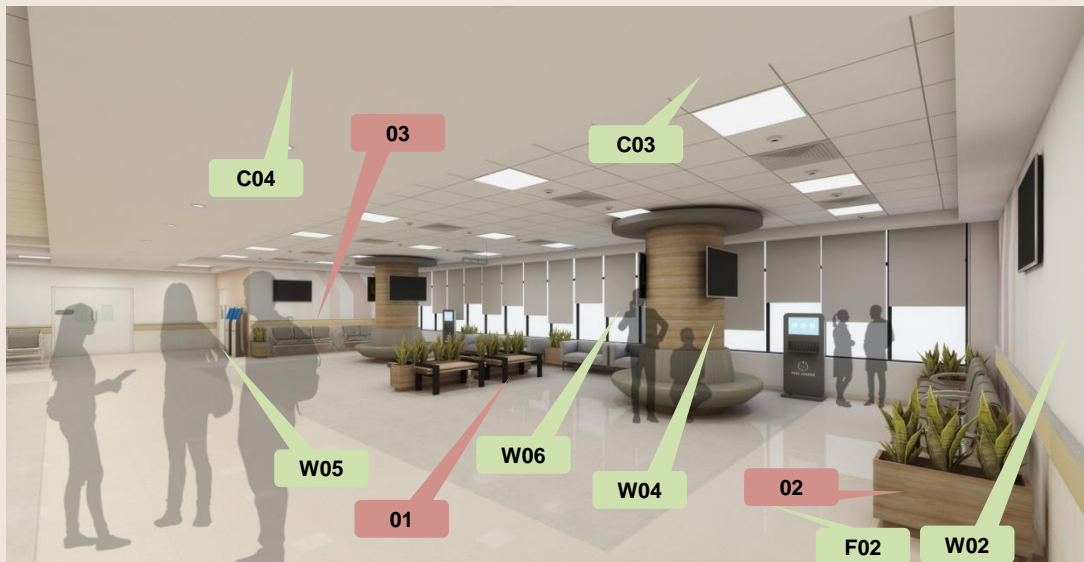
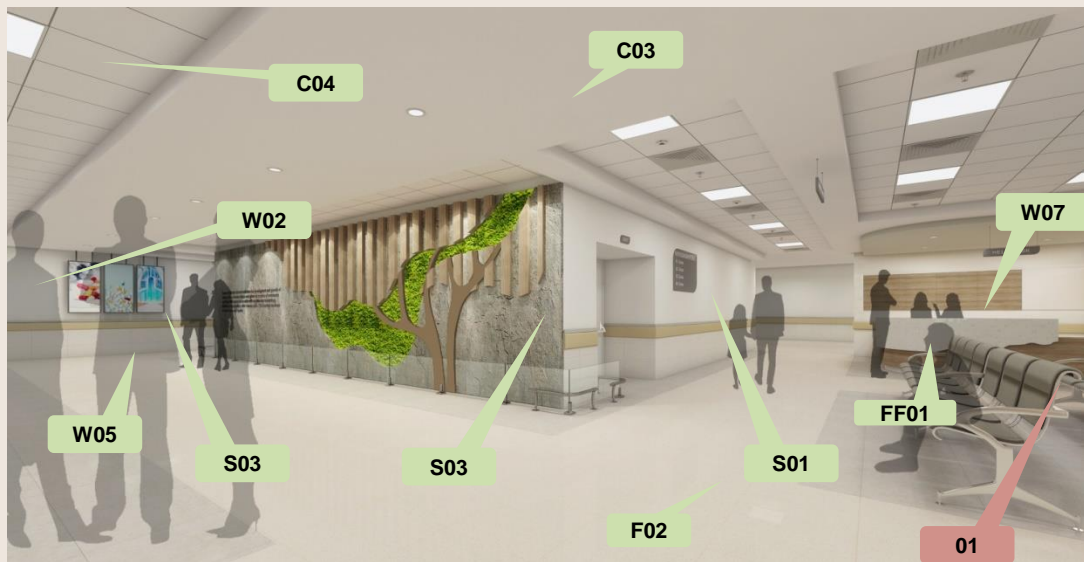


Feature Wall Elevation









Scope of Works

C03 - MR Gypsum Board Ceiling
 C04 - Mineral Fibre Acoustic Ceiling Tiles
 F02 – 600mm x 600mm Tile flooring
 (Base+Highlighter)
 W02 – Acrylic Emulsion Paint Finish
 W04 – ACP Cladding with Flexi-Ply Backing
 W05 – 600mm x 600mm Tile Cladding with
 40mm Granite Trim
 W06 – Roller Blinds
 W07 – Lacquer Glass / Pin Board
 FF01 – Reception Table

S01 – Signage
 S03 – Wall Artwork / Installation

Excluded from Scope

1. Lobby Seating
2. Planter Box (Artificial Plants)
3. LED Display

GENERAL FITOUTS, ELEVATOR, MEDICAL EQUIPMENT, DESIGNER FURNITURE, DECORATIVE LIGHTING, ARCHITECTURAL LIGHTING, MEP EQUIPMENT, ETC NOT IN SCOPE.

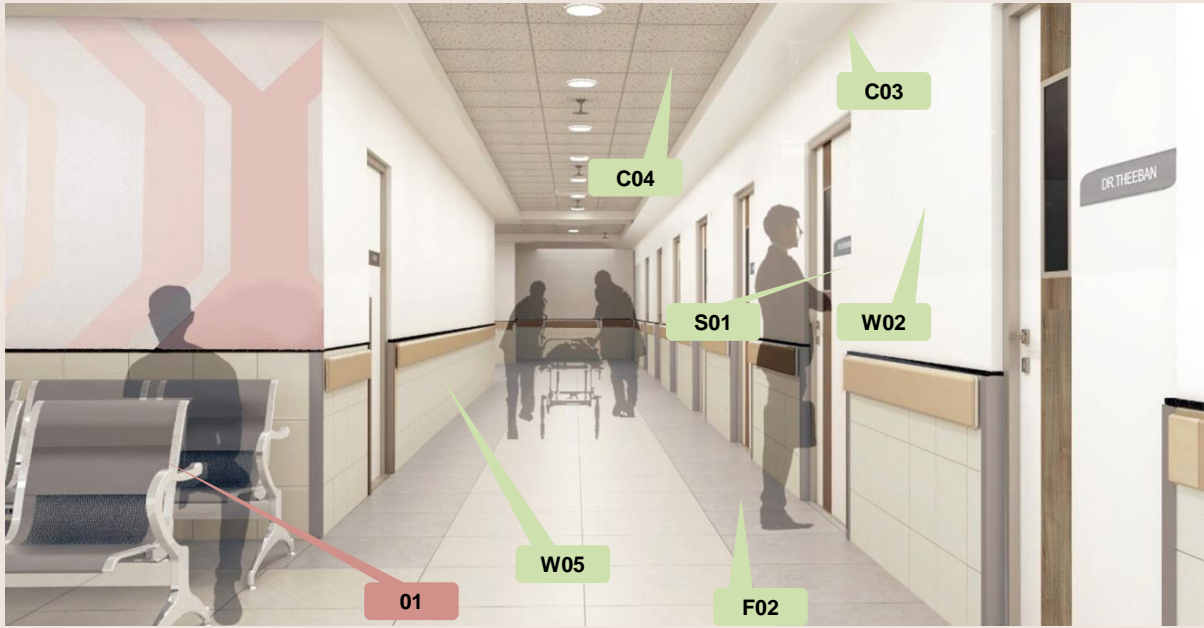


A painted MDF slat wall mural, mimicking an abstract leaf, is proposed along one of the walls.

Paint murals reflecting abstract trees are elements that are repeated.







Scope of Works

C03 - MR Gypsum Board Ceiling

C04 - Mineral Fibre Acoustic Ceiling Tiles

F02 – 600mm x 600mm Tile flooring (Base+Highlighter)

W02 – Acrylic Emulsion Paint Finish

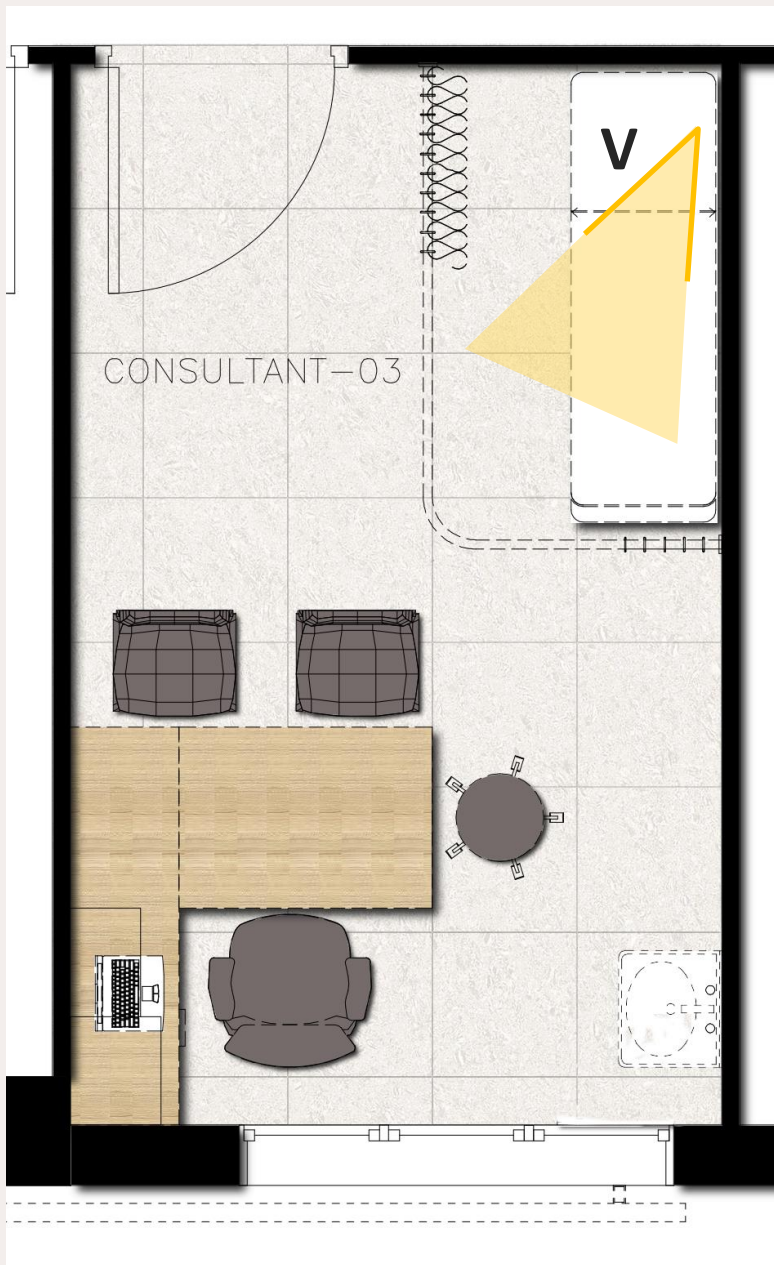
W05 – 600mm x 600mm Tile Cladding

S01 – Signage



Excluded from Scope

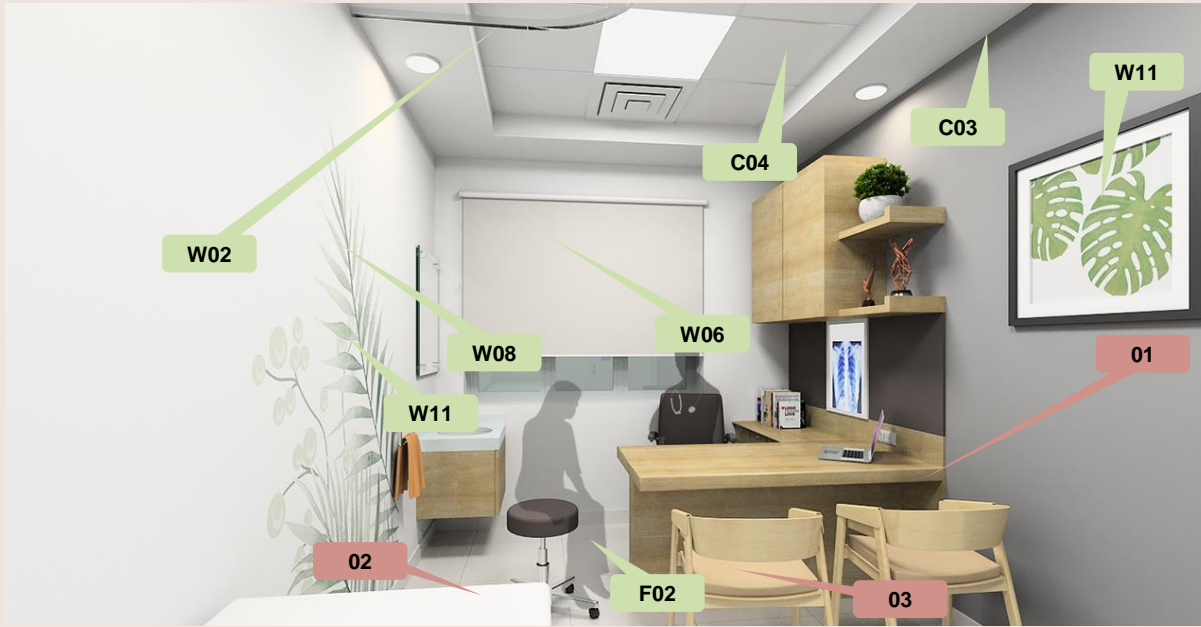
1. Lobby Seating



The OPD room is minimally designed with the recurring wall paint mural along the wash basin wall. The wash basin tile, corresponds to the shape of the paint mural. A framed moss panel proposed on the opposite side, relates the space, to the concept.

OPD CONSULTATION ROOM LAYOUT – CONCEPT 2





Scope of Works

C03 - MR Gypsum Board Ceiling
C04 - Mineral Fibre Acoustic Ceiling Tiles

F02 – 600mm x 600mm Tile flooring

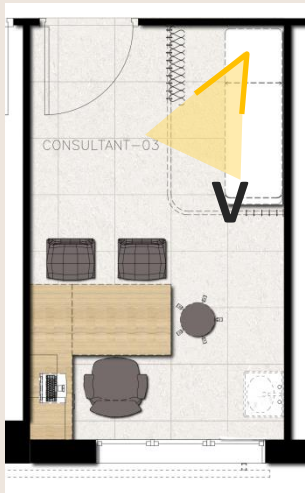
W02 – Acrylic Emulsion Paint Finish

W06 – Roller Blinds

W08 – Curtain Partitions

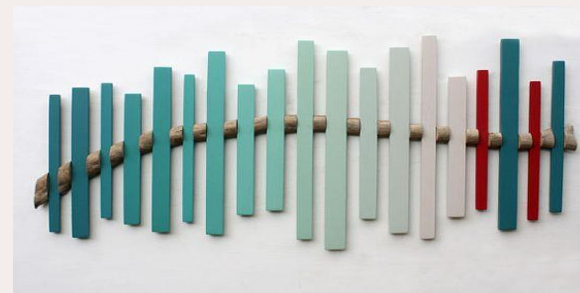
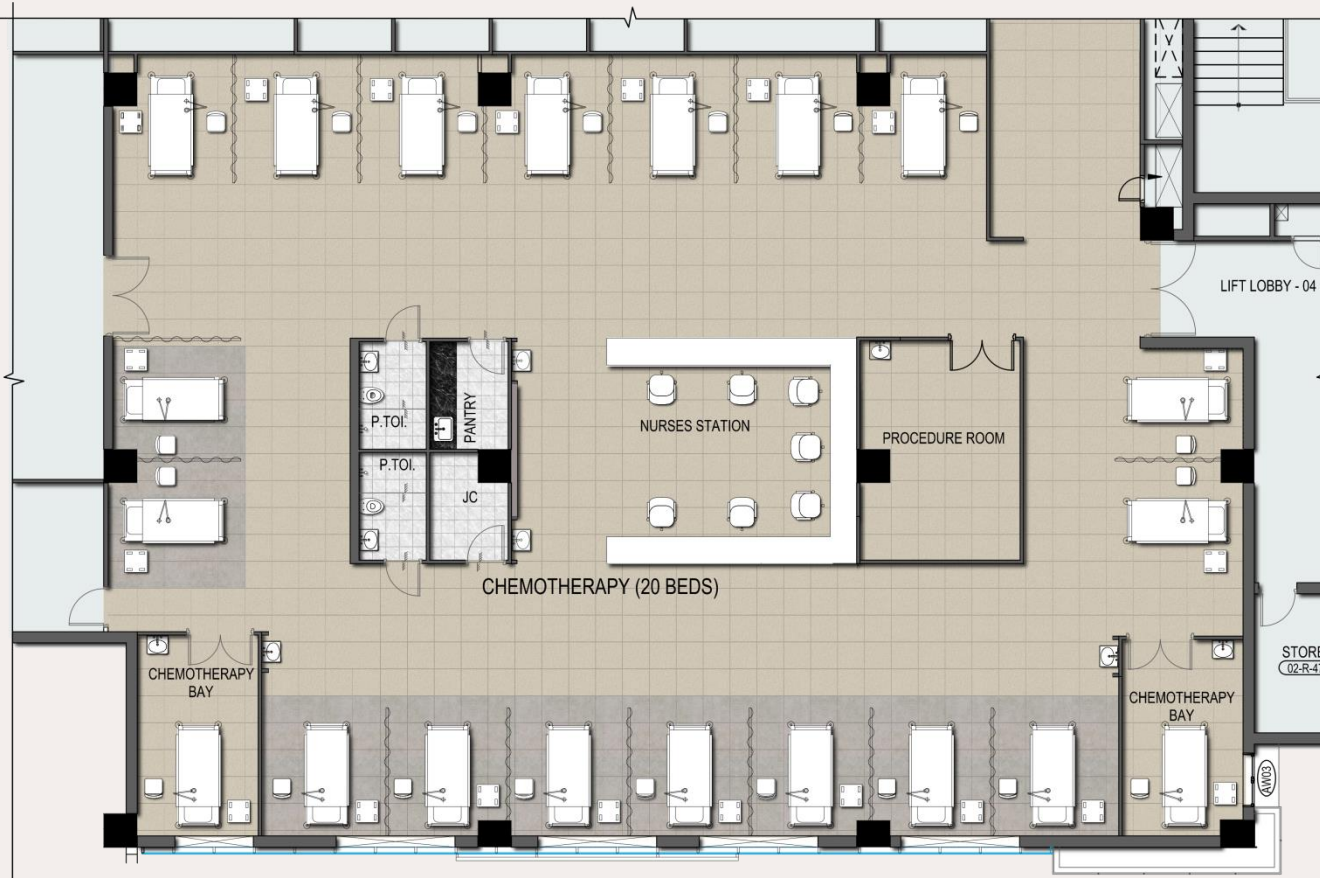
W11 – Artwork

S01 – Signage



Excluded from Scope

1. Doctor's Workstation
2. Patient Examination Bed
3. Loose Chairs



Wall Mural Reference Image



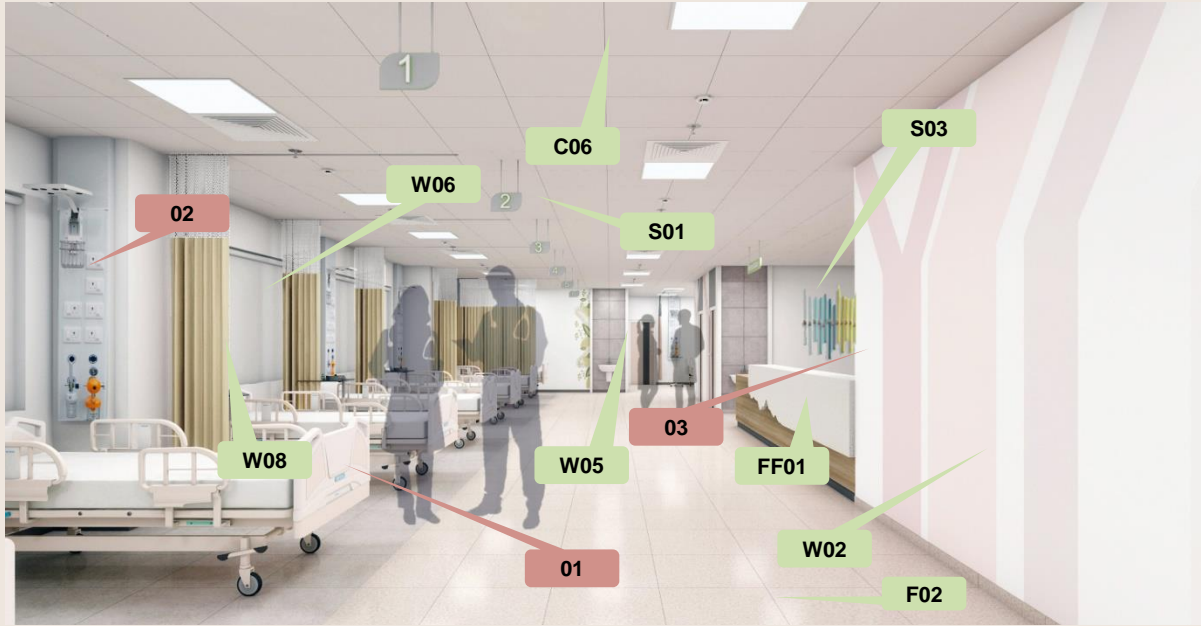
The flooring inlay design is based on the growth pattern of a branch, as seen in the Main Entrance Lobby.

A painted MDF slat wall mural, mimicking an abstract leaf, is proposed along the wall of the Nurse's Station

Wall graphics depicting indigenous foliage and paint murals reflecting abstract trees are elements that are repeated.







Scope of Works

C03 - MR Gypsum Board Ceiling

C06 - Metal Ceiling Tiles

F02 – 600mm x 600mm Tile flooring (Base+Highlighter)

W02 – Acrylic Emulsion Paint Finish

W05 – 600mm x 600mm Tile Cladding

W06 – Roller Blinds

W08 – Curtain Partitions

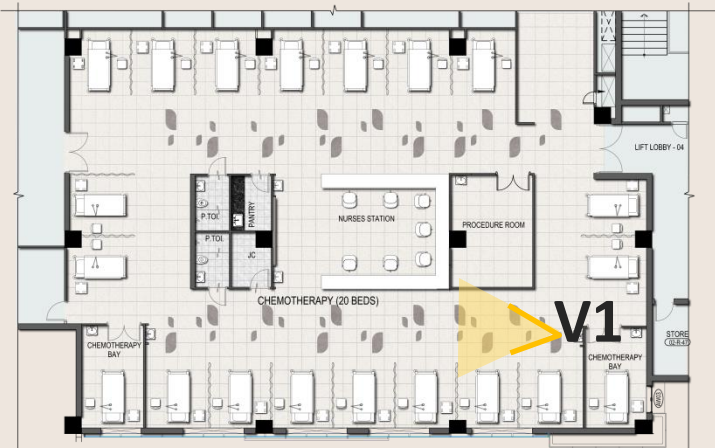
FF01 – Reception Table

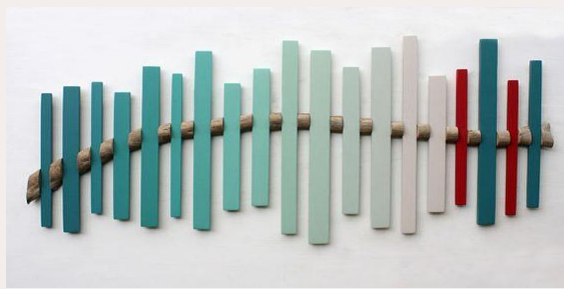
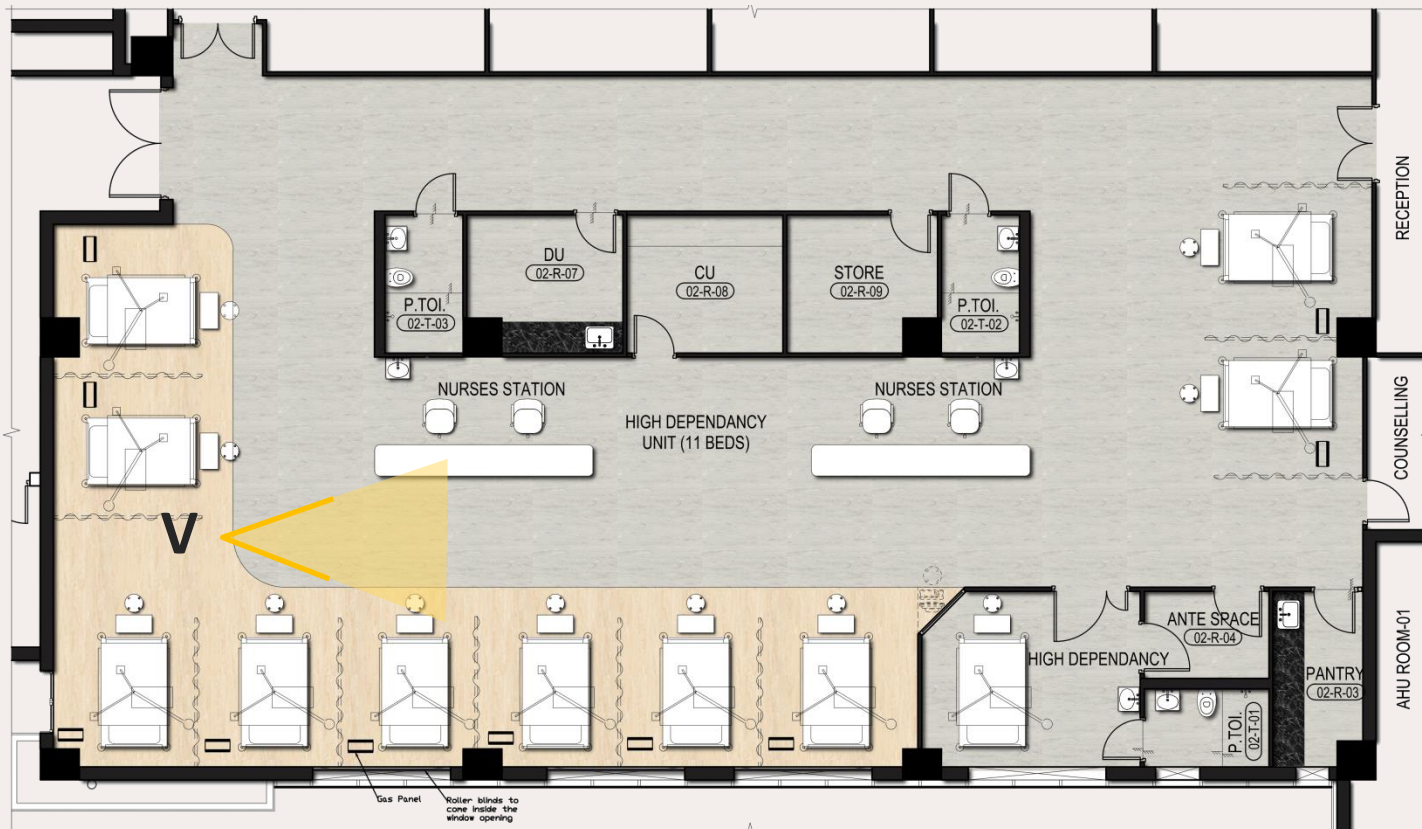
S01 – Signage

S03 – Wall Artwork / Installation

Excluded from Scope

1. Bed
2. Medical Equipment
3. Nurse's Station Chairs





Wall Mural Reference Image



The flooring inlay design is based on the growth pattern of a branch, as seen in the Main Entrance Lobby.

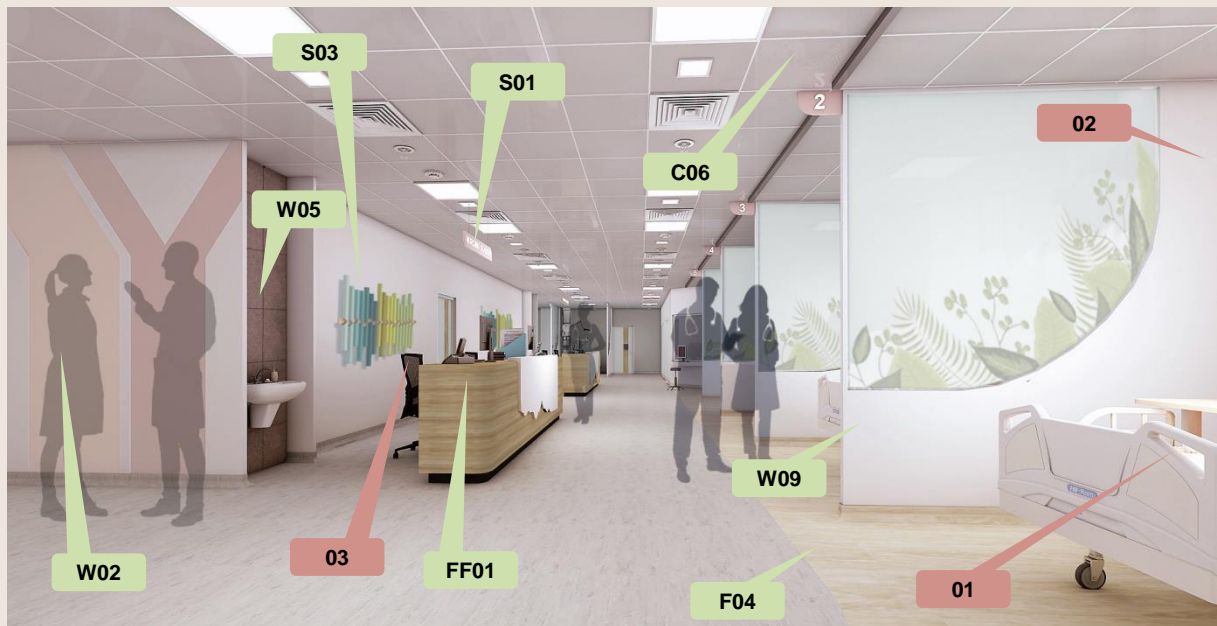
A painted MDF slat wall mural, mimicking an abstract leaf, is proposed along the wall of the Nurse's Station

Paint murals reflecting abstract trees are elements that are repeated.

Semi glazed partitions separate the wards with a provision for curtains. The indigenous foliage graphic is used as frosting on the glass.







Scope of Works

C03 - MR Gypsum Board Ceiling

C06 - Metal Ceiling Tiles

F04 – Vinyl Flooring

W02 – Acrylic Emulsion Paint Finish

W03 – Laminated Ply Panelling

W05 – 600mm x 600mm Tile Cladding

W09 – Gypsum Partition with Part Glazing

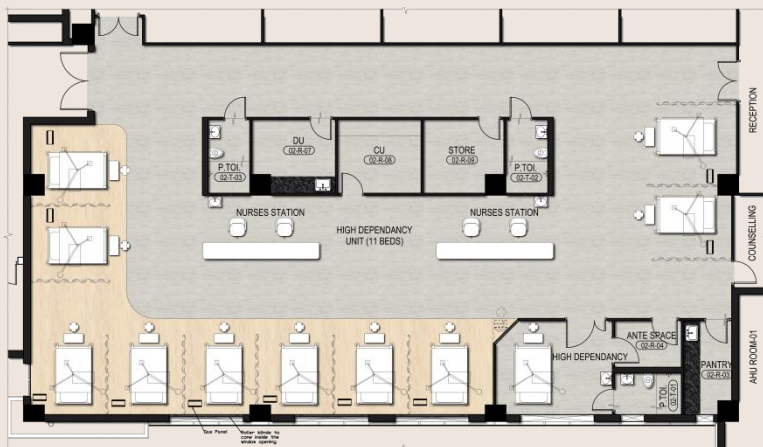
FF01 – Reception Table

S01 – Signage

S03 – Wall Artwork / Installation

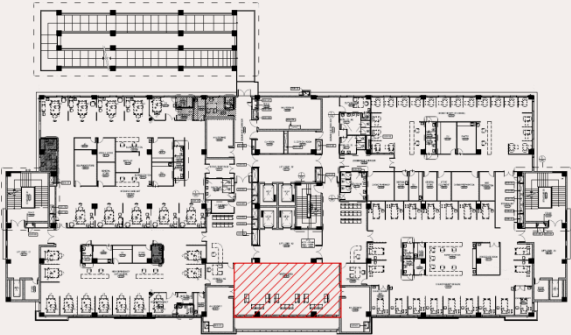
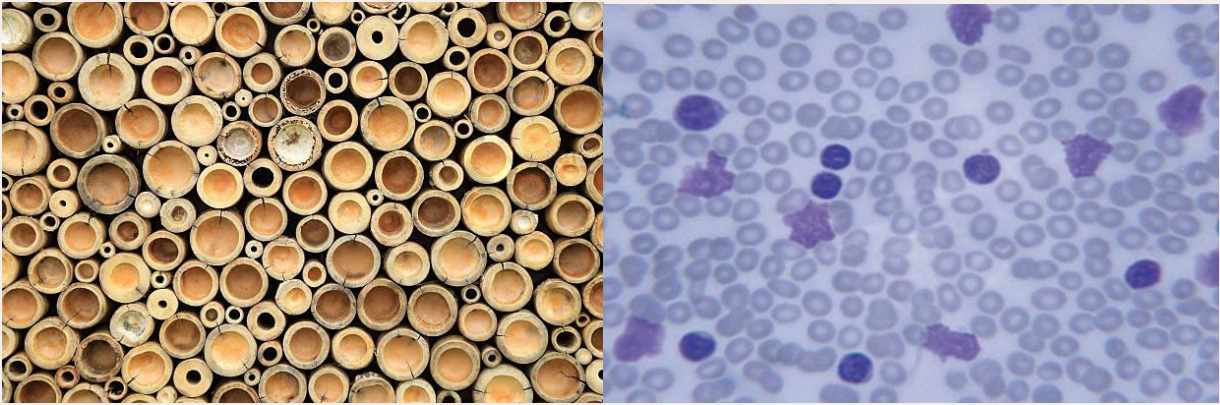
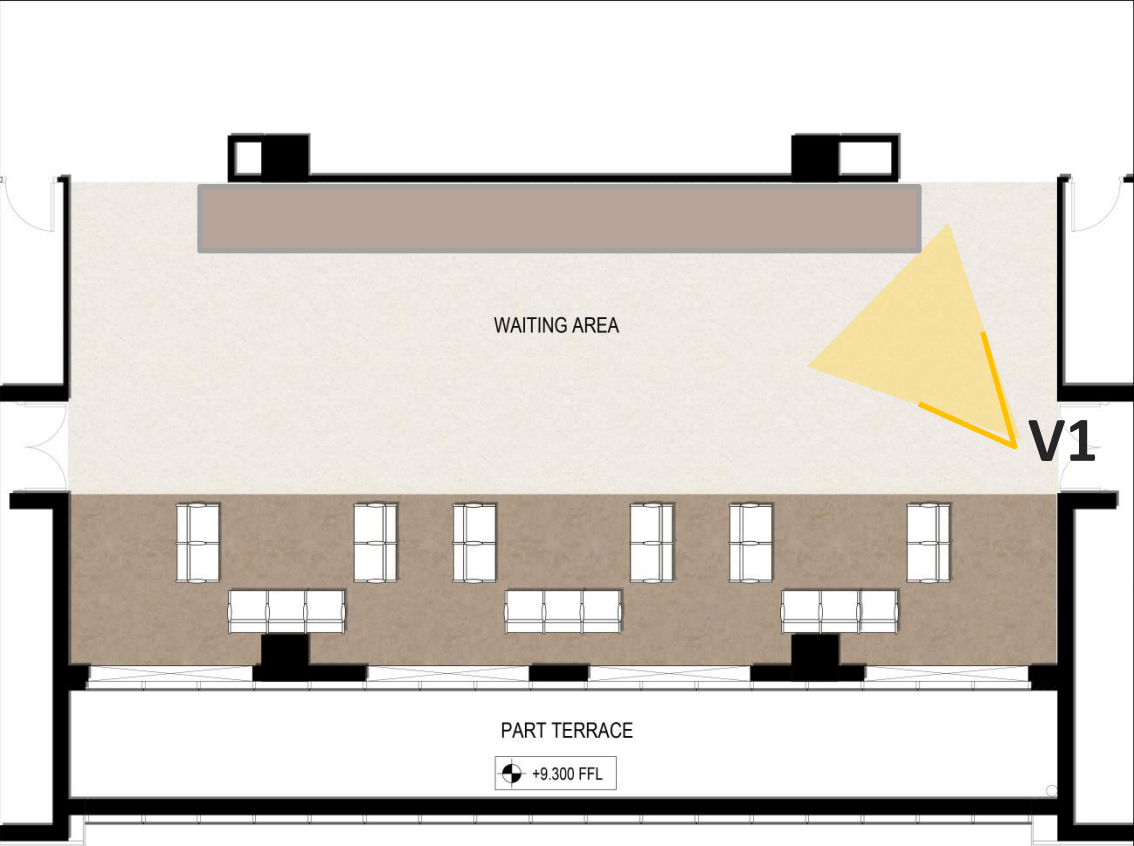
Excluded from Scope

1. Bed
2. Medical Equipment
3. Nurse's Station Chairs

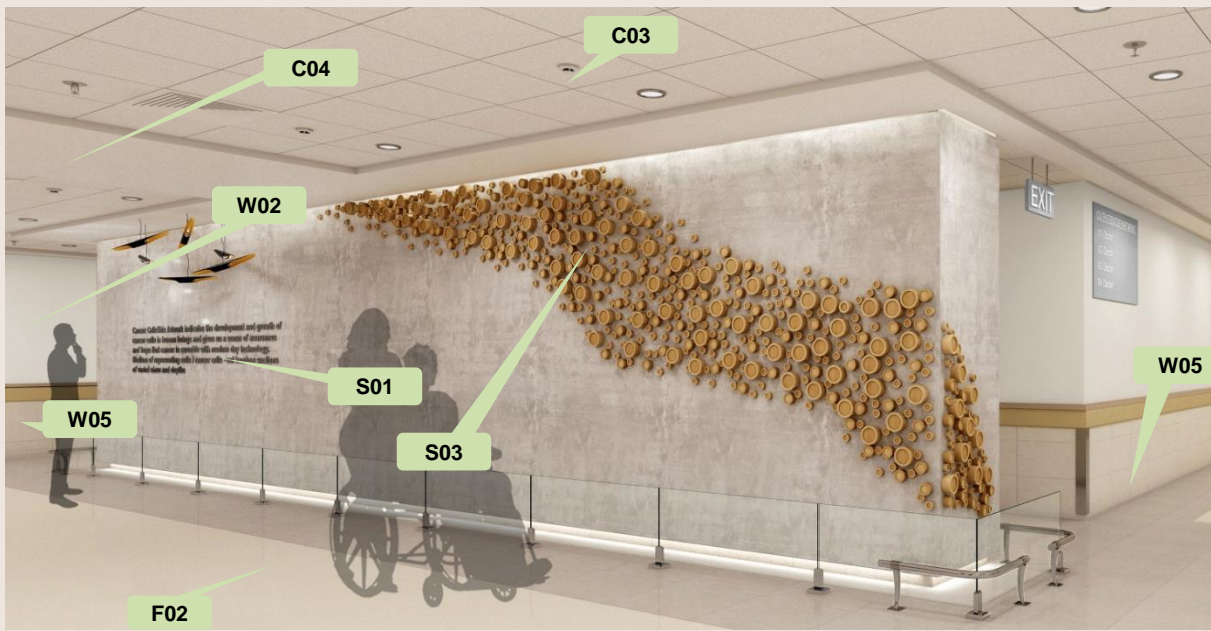


The flooring follows the typical design pattern as seen in other lobby areas.

The feature wall is a unique artwork using bamboo as medium, as a microscopic representation of cancer cells in human beings accented with interesting hanging lights.



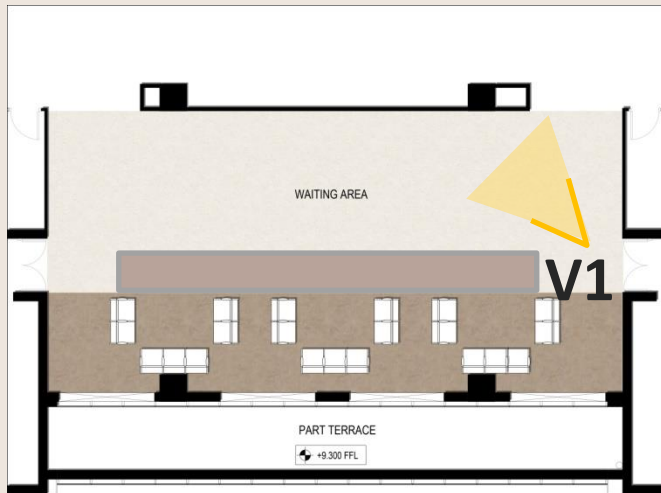




Scope of Works

- C03 - MR Gypsum Board Ceiling
- C04 - Mineral Fibre Acoustic Ceiling Tiles
- F02 – 600mm x 600mm Tile flooring (Base+Highlighter)
- W02 – Acrylic Emulsion Paint Finish
- W04 – ACP Cladding with Flexi-Ply Backing
- W05 – 600mm x 600mm Tile Cladding with 40mm Granite Trim
- W06 – Roller Blinds
- W07 – Lacquer Glass / Pin Board
- FF01 – Reception Table

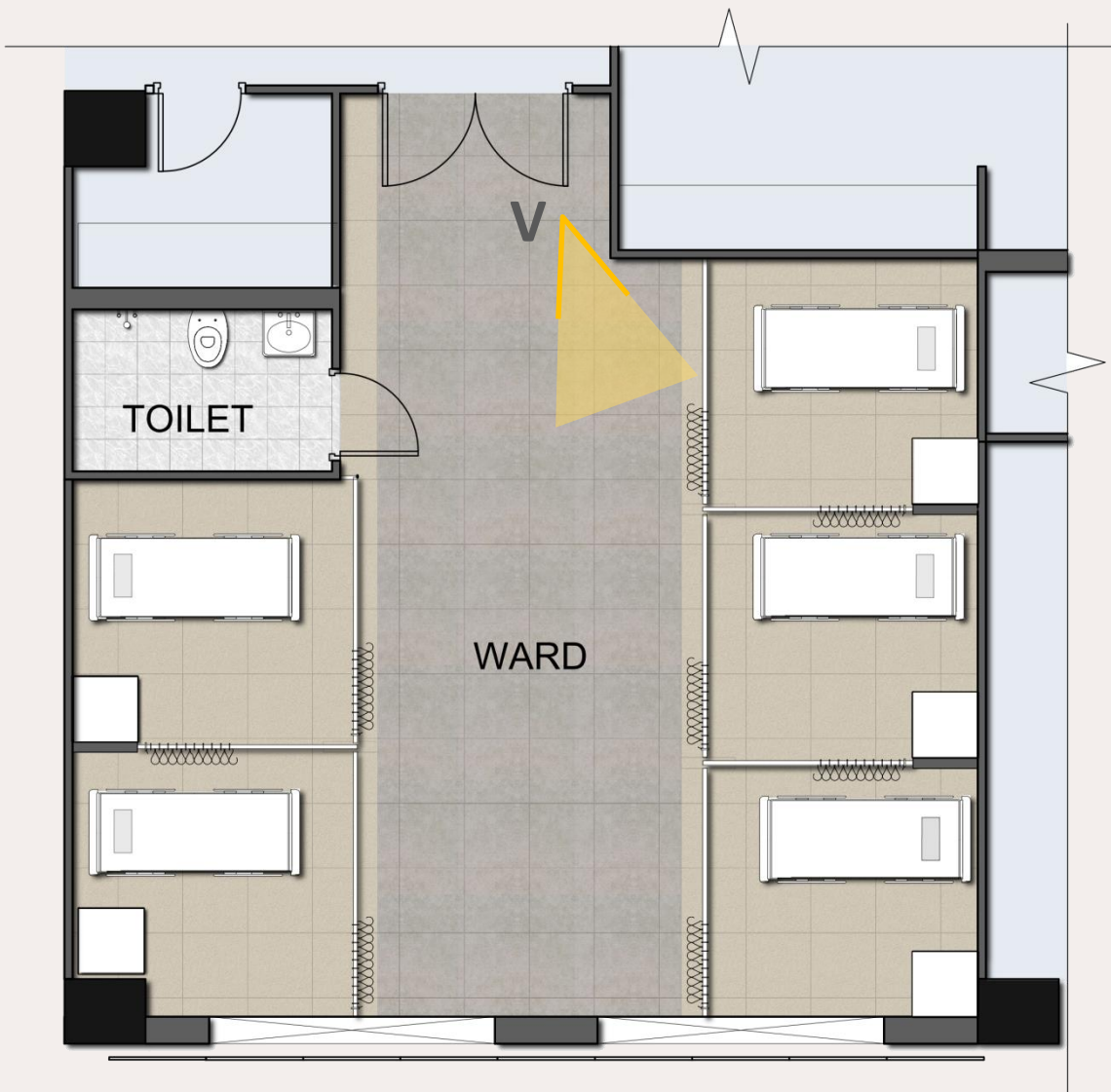
- S01 – Signage
- S03 – Wall Artwork / Installation



Excluded from Scope

1. Lobby Seating
2. Planter Box (Artificial Plants)
3. LED Display

GENERAL FITOUTS, ELEVATOR, MEDICAL EQUIPMENT, DESIGNER FURNITURE, DECORATIVE LIGHTING, ARCHITECTURAL LIGHTING, MEP EQUIPMENT, ETC NOT IN SCOPE.

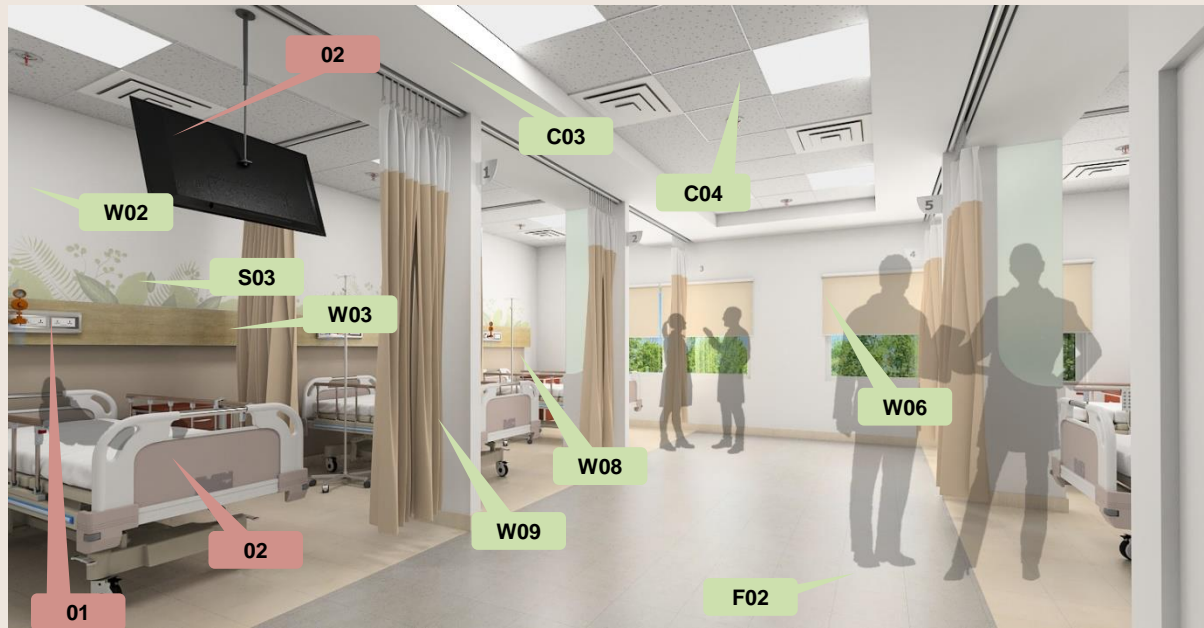


The flooring inlay design is based on the growth pattern of a branch, as seen in the Main Entrance Lobby.

Each ward is separated with a semi glazed 750mm wide partition, creating a sense of privacy. The curtain mechanism is concealed but still easily accessible.

Wall graphics depicting indigenous foliage and paint murals reflecting abstract trees are elements that are repeated.





Scope of Works

C03 - MR Gypsum Board Ceiling

C04 - Mineral Fibre Acoustic Ceiling Tiles

F02 – 600mm x 600mm Tile flooring (Base+Highlighter)

W02 – Acrylic Emulsion Paint Finish

W03 – Laminated Ply Panelling

W06 – Roller Blinds

W08 – Curtain Partitions

W09 – Gypsum Partition with Part Glazing

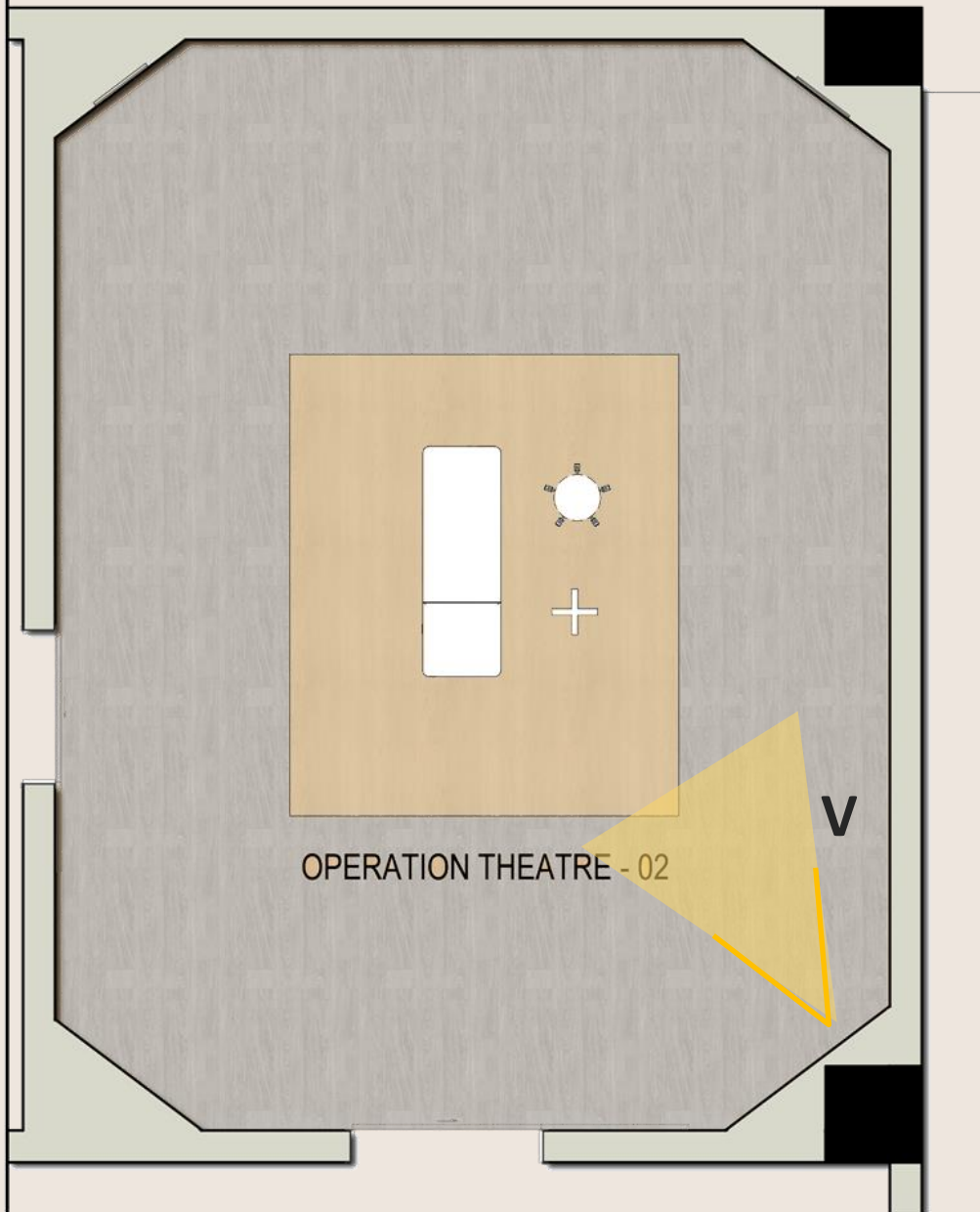
S01 – Signage

S03 – Wall Artwork / Installation

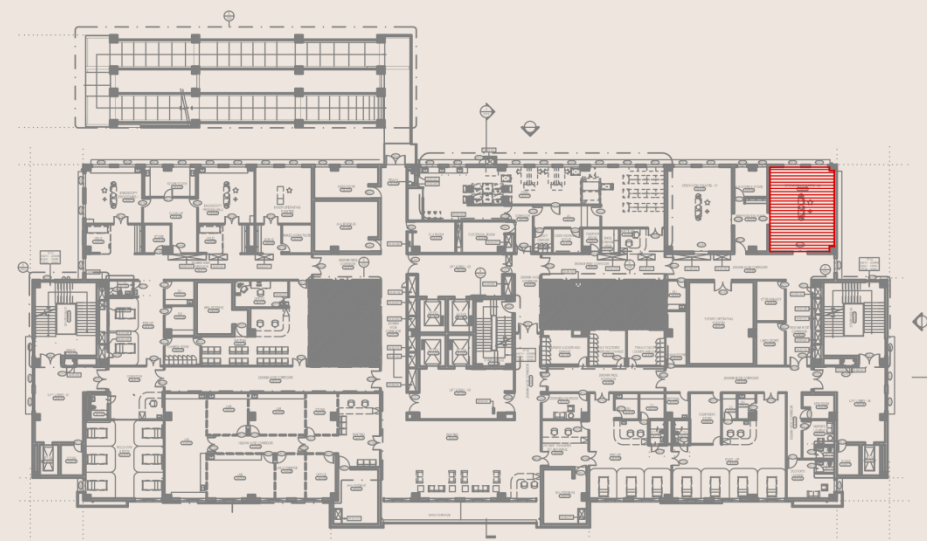
Excluded from Scope

1. Bed
2. Medical Equipment
3. LED TV

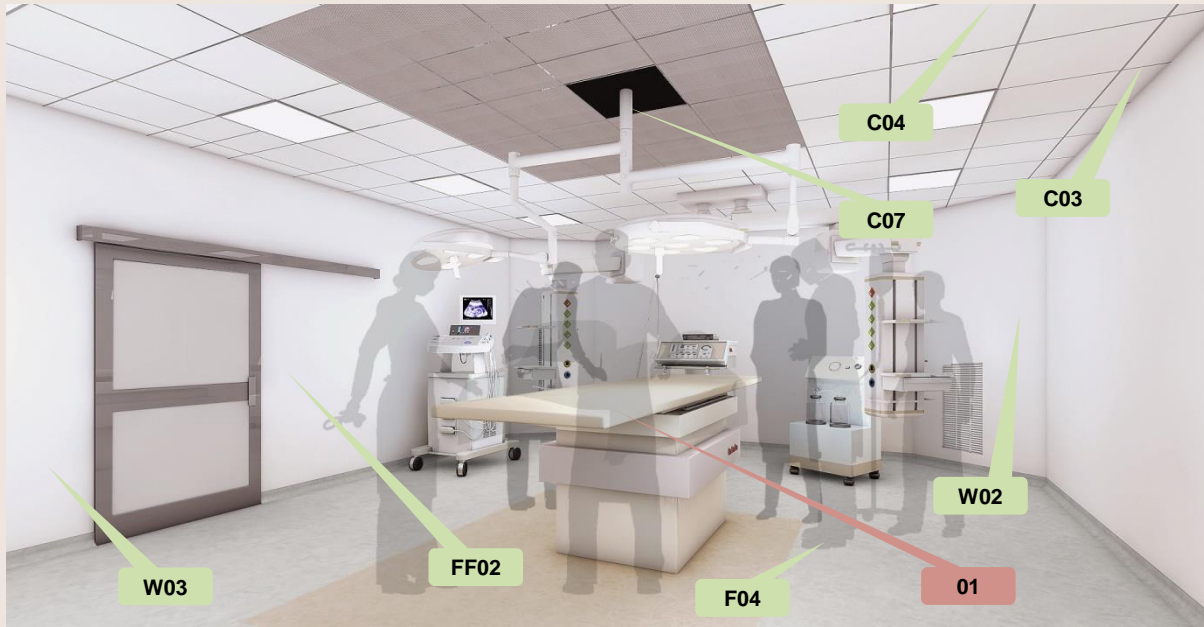




Concept of light and contrast
warm colours used in a modern
simplicity.







Scope of Works

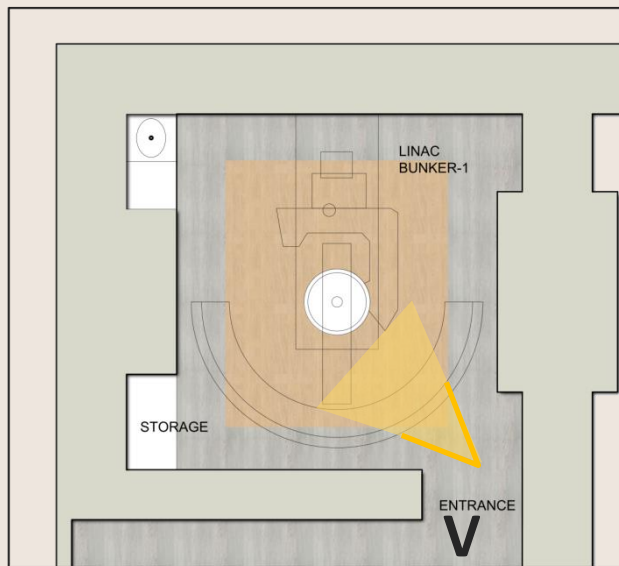
C03 - MR Gypsum Board Ceiling

C06 - Metal Ceiling

F04 – Vinyl Flooring

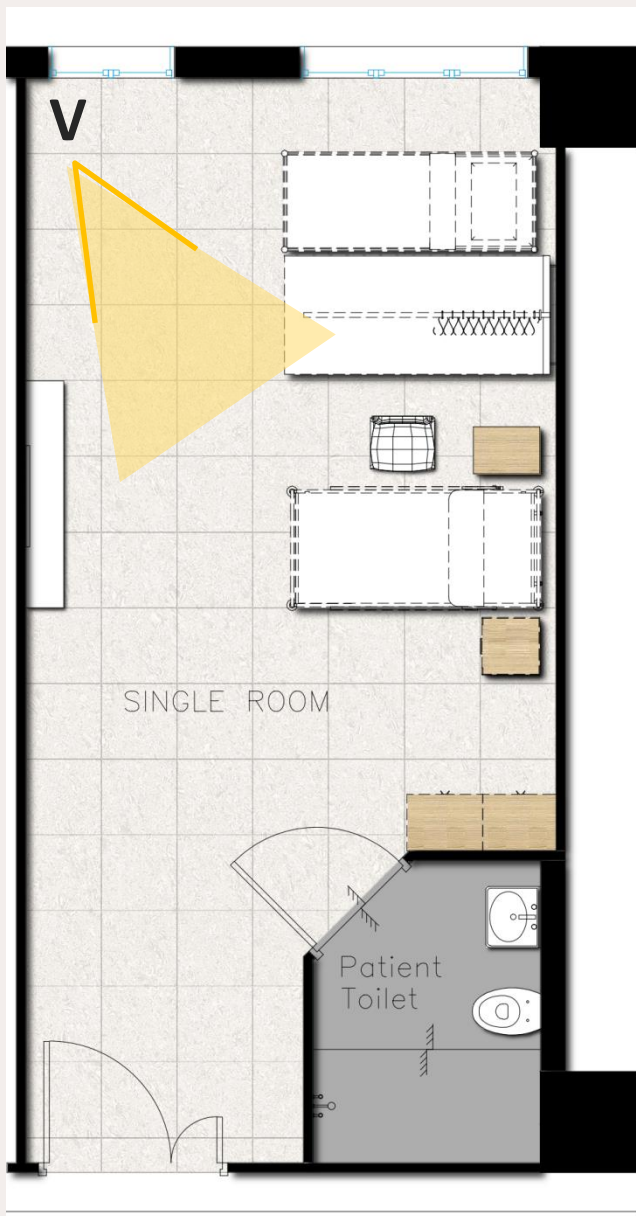
W02 – Acrylic Emulsion Paint Finish

W03 – Laminated Ply Panelling



Excluded from Scope

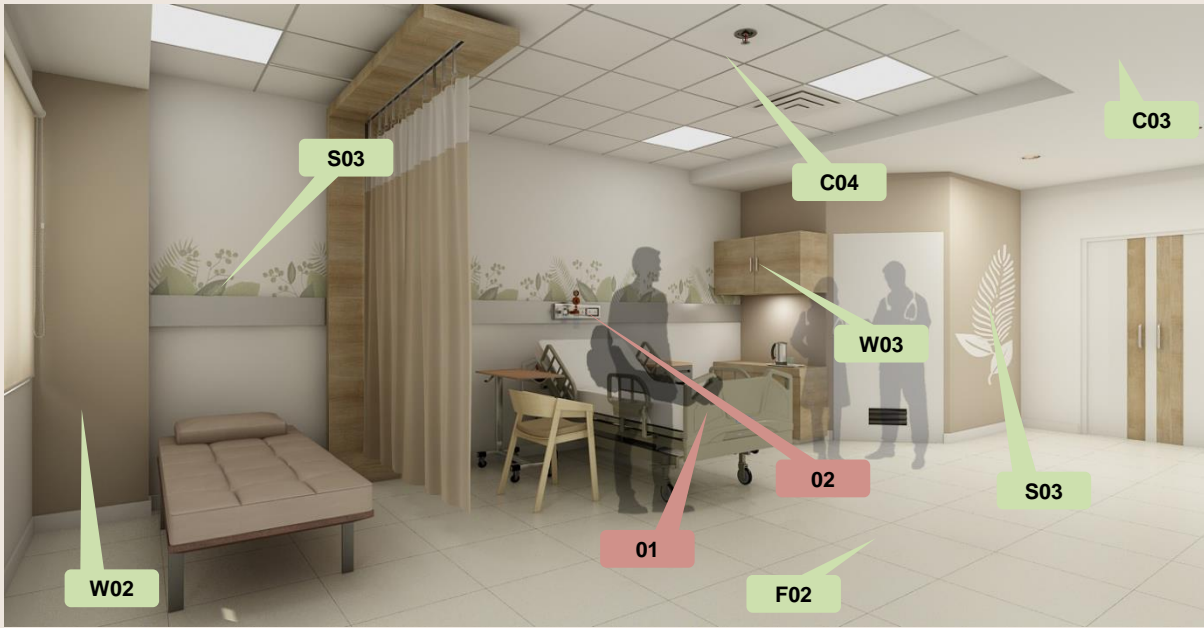
1. Medical Equipment



Each room is separated with a semi by a panel with a curtain, creating a sense of privacy for the patient. The curtain mechanism is concealed but still easily accessible.

Wall graphics depicting indigenous foliage is a repeated element.





Scope of Works

C03 - MR Gypsum Board Ceiling

C04 - Mineral Fibre Acoustic Ceiling Tiles

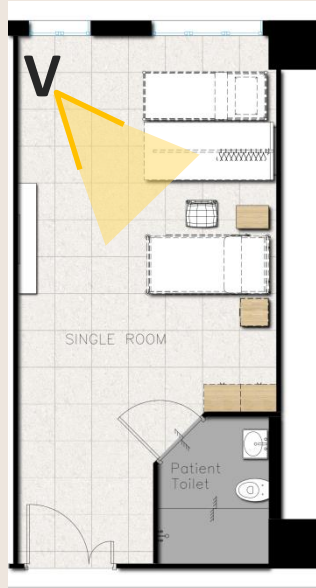
F02 – 600mm x 600mm Tile flooring (Base+Highlighter)

W02 – Acrylic Emulsion Paint Finish

W03 – Laminated Ply Panelling / Storage Unit

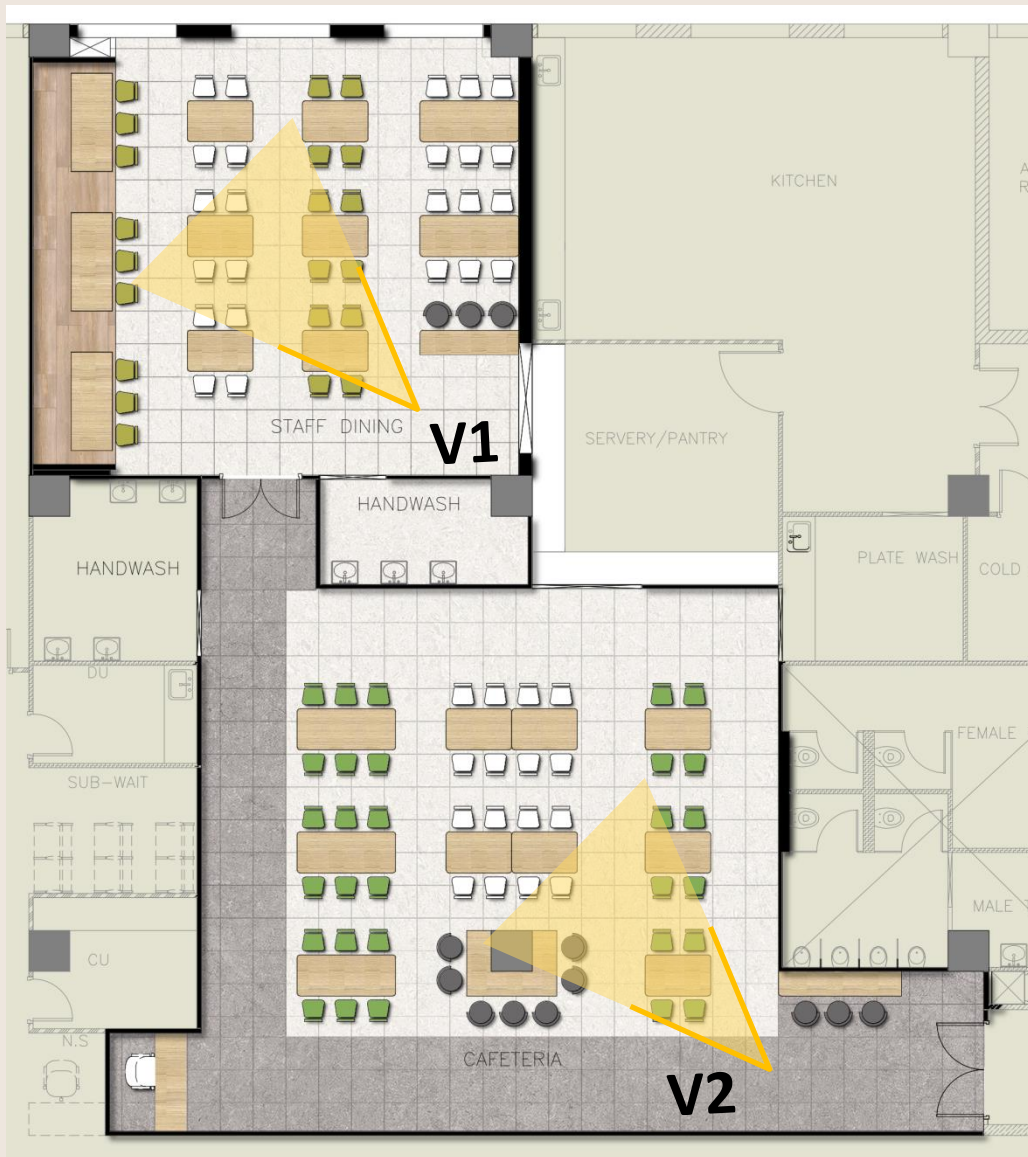
S01 – Signage

S03 – Wall Artwork / Installation



Excluded from Scope

1. Medical Bed / Attender Day Bed
2. Medical Equipment
3. Visitor Chair



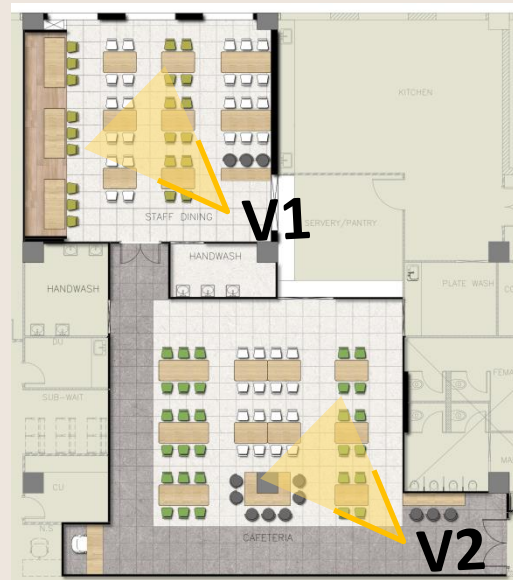
Paint murals reflecting abstract trees are elements that are repeated.

Staff dining is designed to provide a cozy and relaxing ambience using brown and white as prominent colours to create a more relaxing and calm ambience and tropical greeneries in graphical form represent the concept of resilience whereas the visitors dining caters for more fast phase audience as well as concentrates on the cultural and regional aspects of north east to make the space familiar and relatable.









Scope of Works

C01 – Metal Perforated Ceiling
 C03 - MR Gypsum Board Ceiling
 C04 - Mineral Fibre Acoustic Ceiling Tiles
 C05 – Laminated Ply Ceiling

F02 – 600mm x 600mm Tile flooring
 (Base+Highlighter)

W02 – Acrylic Emulsion Paint Finish
 W03 – Laminated Ply Panelling
 W06 – Roller Blinds
 W09 – Graphic Wall

FF01 – Cashier Table
 S01 – Signage



Excluded from Scope

1. Tables & Seating
2. LED Display

GENERAL FITOUTS, ELEVATOR, MEDICAL EQUIPMENT, DESIGNER FURNITURE, DECORATIVE LIGHTING, ARCHITECTURAL LIGHTING, MEP EQUIPMENT, ETC NOT IN SCOPE.

THANK YOU